

The NLM Technical Bulletin

ISSN 0146-3055
JULY-AUGUST 1995
No. 285

In This Issue

NLM Online Training Program:
January-April 1996 Schedule 1
NLM FTS2000--No Password Option 7
Gold Standard Search 8
NLM Unveils "The Visible Man" 13

Appendixes:

NLM Online Services Training Schedules:
Fundamentals of Searching 21A
Specialized Modules 23B
MEDLARS Refresher & Review 25C
Request for NLM Online Training 27D

Regular Features:

Databases 2
Technical Notes 3
Serials Update 15

NLM Online Training Program: January-April 1996 Schedule

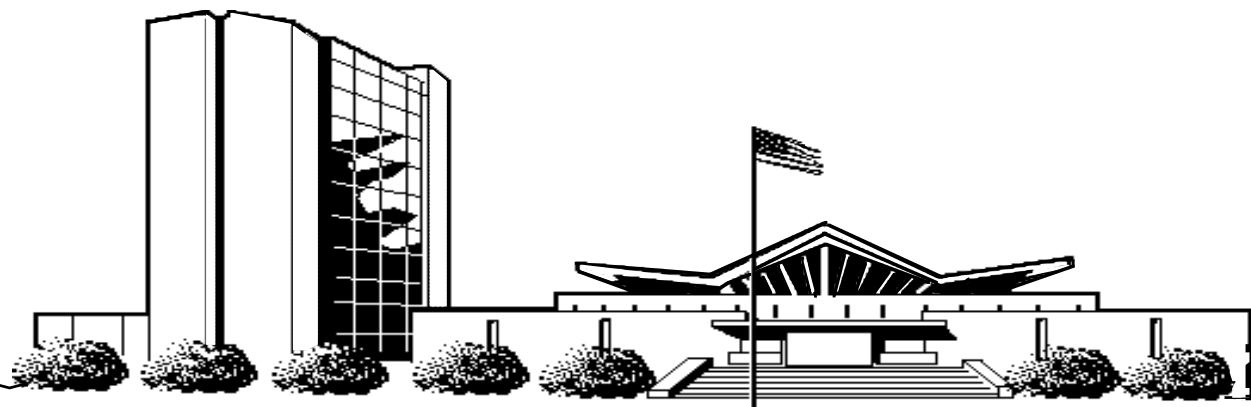
The January-April 1996 schedule of NLM Online Services Training classes has been finalized. At this time we are announcing only the January through April schedule of classes due to pending negotiation of the National Network of Libraries of Medicine online training contract. The remainder of the classes for 1996 and other NLM training program announcements will be included in a future issue of the *Technical Bulletin*.

The schedules are in Appendixes A, B and C. The registration form is in Appendix D. These classes focus on techniques for searching the MEDLARS databases using command language searching. The NLM Online Services Training Program consists of a basic module plus five specialized modules.

The basic module is:

Fundamentals of MEDLARS Searching: This *three-day* class for new searchers focuses on ELHILL commands, MEDLINE, and MeSH vocabulary.

Continued on page 6



**NLM
TECHNICAL
BULLETIN**

Head, MMS
Carolyn B. Tilley

Co-Editor
Toby G. Port

Co-Editor
Mary Herron

Technical Notes Editor
Marcia Zorn

Direct Inquiries to:
MEDLARS Management Section
National Library of Medicine
Bldg., 38A, Rm. 4N421
Bethesda, Maryland 20894
(800) 638-8480
mms@nlm.nih.gov

MEDLARS Inquiries:
mms@nlm.nih.gov

Grateful Med Inquiries:
gmhelp@gmedserv.nlm.nih.gov

**CONTENTS
NOT COPYRIGHTED
FREELY
REPRODUCIBLE**

The NLM Technical Bulletin is
an administrative document
sent to formal members of
NLM's MEDLARS Online
Network.

MEDLARS® DATABASE	TOTAL RECORDS	DATES COVERED	DATE UPDATED	UPDATE TAG
ELHILL® COMPUTER				
AIDSDRUGS	225		29 JUL 95	9502(EM)
AIDSLINE®*	116,022	JAN 80-OCT 95	09 AUG 95	9510(EM)
AIDSTRIALS	667		05 AUG 95	9412(EM)
AVLINE®	28,982	THRU AUG 95	03 AUG 95	
BIOETHICSLINE®	46,464	JAN 73-AUG 95	15 JUL 95	9508(EM)
BIOTECHSEEK	Removed from MEDLARS		03 JUL 95	9507(EM)
CANCERLIT®	1,140,483	JAN 63-AUG 95	05 AUG 95	9508(EM)
CATLINE®	752,832	THRU AUG 95	03 AUG 95	
CHEMID	267,994		06 FEB 93	
CHEMLINE®	1,364,403		22 JUL 95	9402(EM)
DENTALPROJ™	896		29 JUL 94	
DIRLINE®	17,947		27 MAY 95	
DOCUSER®	14,316		05 AUG 95	
HEALTH	832,524	JAN 75-SEP 95	05 AUG 95	9509(EM)
HISTLINE®	153,187	JAN 70-AUG 95	05 AUG 95	9508(EM)
HSRProj	2,047		01 JUN 95	
HSTAR**	1,633,888	1985-OCT 95	08 AUG 95	9510(EM)
MEDLINE®***	1,263,167	JAN 92-OCT 95	05 AUG 95	9510(EM)
MED90	748,681	JAN 90-DEC 91	02 AUG 95	
MED85	1,688,445	JAN 85-DEC 89	24 JUN 95	
MED80	1,388,882	JAN 80-DEC 84	15 APR 95	
MED75	1,278,996	JAN 75-DEC 79	08 JUL 95	
MED66	1,986,347	JAN 66-DEC 74	03 JUN 95	
MESH VOCABULARY FILE®	102,345	1995	05 AUG 95	
NAME AUTHORITY FILE®	Removed from MEDLARS		08 APR 95	
PDQ®		THRU AUG 95	01 AUG 95	
POPLINE®	221,218	1970-JUN 95	08 JUL 95	9507(EM)
SDILINE®	37,930	SEP 95	29 JUL 95	9509(EM)
SERLINE®	86,144	THRU JUL 95		9505(EM)
TOXLINE®	1,400,208	1981-1995	13 MAY 95	9505(EM)
TOXLINE65	707,146	PRE 1965-1980	30 APR 94	
TOXLIT®	1,423,192	1981-1995	13 MAY 95	9505(EM)
TOXLIT65	586,405	1965-1980	01 SEP 87	
* AIDSLINE:	PART 1 OF 5 FOR 9510 (EM)	WEEKLY UPDATE		
** HSTAR:	PART 1 OF 5 FOR 9510 (EM)	WEEKLY UPDATE		
*** MEDLINE:	PART 1 OF 4 FOR 9510 (EM)	WEEKLY UPDATE		
TOXNET® COMPUTER				
CCRIS	6,720		02 AUG 95	
DART™	25,149		04 AUG 95	
EMIC	11,266		04 AUG 95	
EMICBACK	75,886		04 APR 94	
ETICBACK	49,591		04 APR 94	
GENE-TOX	2,960		03 AUG 94	
HSDB®	4,504		04 AUG 95	
IRIS	666		02 AUG 95	
RTECS®	129,460		06 AUG 95	
TRI87	80,404		01 AUG 95	
TRI88	87,638		01 AUG 95	
TRI89	87,500		31 JUL 95	
TRI90	86,995		31 JUL 95	
TRI91	85,135		01 AUG 95	
TRI92	82,684		31 JUL 95	
TRI93	80,379		31 JUL 95	
TRIFACTS	326		10 APR 92	

Technical Notes

USA Added to the MEDLINE Address (AD) Field

Starting with data entered during the MEDLINE 9506 Entry Month (EM), the string 'USA' is being added in the Address (AD) field if the primary author's affiliation address is in any of the 50 states or the District of Columbia. No attempt is being made to add this information retrospectively to older records. This addition to MEDLINE data will carry over into other files that contain MEDLINE subfiles.

Following is a search example that limits to address in the United States:

USER:
9506 (em)

PROG:
SS (1) PSTG (39808)

SS 2 /C?
USER:
1 and usa (ad)

PROG:
SS (2) PSTG (237)

SS 3 /C?
USER:
prt ad 3

PROG:

1
AD - Brigham and Women's Hospital,
Boston, Massachusetts, USA.

2
AD - Department of Epidemiology and
Public Health, Yale University School of
Medicine, New Haven, Connecticut, USA.

3
AD - Department of International Health,
Johns Hopkins School of Hygiene and Public
Health, Baltimore, Maryland, USA.

BIOTECHSEEK Merged with MEDLINE

Friday, June 30, 1995 was the last day that the BIOTECHSEEK (BIOSEEK) file was available online. During the

regular weekly update to MEDLINE on Saturday, July 1, 1995, the 6,348 citations that were in BIOSEEK were merged into MEDLINE.

BIOSEEK was originally developed to complement MEDLINE. It contained bibliographic citations from approximately 30 selectively indexed biotechnology journals not indexed for MEDLINE.

The addition of BIOSEEK references enables MEDLINE to offer more complete coverage of biotechnology-related material, including molecular sequence databank information. The former BIOSEEK references are tagged with the Special List Indicator (LI) value of B. New citations from the Special List B journals are being added directly to MEDLINE.

Effective with 1995 date of publication issues, NLM is using the broader MEDLINE selection policy for former BIOSEEK journals now in MEDLINE to determine which articles are to be indexed. This means that the more general articles in scope for MEDLINE are indexed along with the more specific articles that contain sequence data.

AIDSLINE Additions

The 9507 (EM) update of AIDSLINE included abstracts from the NIH Conference on Retroviral Integrase (added on July 13, 1995) and the Australasian Society for HIV Medicine 6th Annual Conference held with the National Centre in HIV Virology Research and the Australian Nurses in AIDS Group on November 3-6, 1994 (abstracts added on July 14, 1995). To isolate these records, at any USER: prompt in AIDSLINE enter:

(si) aids and meeting abstract (pt) and 9509 (em)
for the Conference on Retroviral Integrase

(si) ASHM6 and 9509 (em)
for the Australasian Society HIV Medicine Conference

Please remember that these are citations to meeting abstracts, not journal articles. The full text of the abstract is online—nothing more can be supplied via interlibrary loan. Papers presented at a meeting may be prepublication; information regarding subsequent publication or further details should be directed to the authors. Author affiliation (organization name, city, state, and zip code of where the author was located when the research was performed or where the paper was presented) is provided in the Address (AD) field of the AIDSLINE record.

PDQ Available via the NLM Gateway

A "new and improved" version of PDQ became available July 3, 1995. A user can now login by choosing **P - PDQ for Cancer Information** from the NLM welcome menu, or by choosing **B - Biomedical Databases** and then **file pdq** at a USER: prompt. Users can also now switch to any ELHILL database (e.g., MEDLINE, CANCERLIT) or to TOXNET files from PDQ with the **file** command followed by the desired database name. The new PDQ features were discussed in detail in the July-August 1994 *Technical Bulletin*, pages 17-19.

Up-to-date instructions to obtain the guide may be found by accessing the PDQ database and selecting the following:

- 2 News
- 5 Information about PDQ and Related Services
- 7 PDQ User Guide Available (7/95)

TOXNET Available via the NLM Welcome Menu

On July 20, 1995, NLM added TOXNET as an option on the NLM welcome menu. A user can now login by choosing **T - Toxicology Data Network (TOXNET)** from the NLM welcome menu or by choosing **B - (Biomedical Databases)**, and then typing **file toxnet** at a USER: prompt.

1996 Publications Ordering and Pricing Information

The ordering and pricing information for four 1996 MeSH Tools and the *List of Serials Indexed for Online Users (LSIOU)*, is available. These publications may now be ordered from NTIS. Please note that NTIS will not be issuing microfiche copies of these titles. Questions concerning orders may be directed to NTIS at 800-423-9255. Callers from outside the U.S. or Canada may reach NTIS at 703-487-4650. Questions about standing orders should be directed to the NTIS Subscription Section at 703-487-4630.

Medical Subject Headings--Annotated Alphabetic List, 1996

Single Demand Order Number:
PB96-964801
NTIS Standing Order Number:
PB96-964800
Hardcopy Price:
\$47.50 (U.S./Canada/Mexico)
\$95.00 (other countries)

Medical Subject Headings--Tree Structures, 1996

Single Demand Order Number:
PB96-964901
NTIS Standing Order Number:
PB96-964900
Hardcopy Price:
\$43.00 (U.S./Canada/Mexico)
\$86.00 (other countries)

Permuted Medical Subject Headings, 1996

Single Demand Order Number:
PB96-965101
NTIS Standing Order Number:
PB96-965100
Hardcopy Price:
\$38.75 (U.S./Canada/Mexico)
\$77.50 (other countries)

Medical Subject Headings--Supplementary Chemical Records, 1996

Single Demand Order Number:
PB96-965001
NTIS Standing Order Number:
PB96-965000
Hardcopy Price:
\$55.25 (U.S./Canada/Mexico)
\$110.50 (other countries)

List of Serials Indexed for Online Users, 1996 (LSIOU)

Single Demand Order Number:
PB96-965201
NTIS Standing Order Number:
PB96-965200
Hardcopy Price:
\$26.50 (U.S./Canada/Mexico)
\$53.00 (other countries)

Reminder: MeSH Trees Available via the Internet

NLM makes an electronic file of the MeSH Tree Structures available free from the NLM anonymous ftp server --nlmpubs.nlm.nih.gov. The file is in the directory /online/mesh as MTREES95.EXE and is also available, at no cost, on a 3.5" floppy disk for those without Internet access (contact Jane Rosov, MEDLARS Management Section, fax: 301-496-0822). The MeSH Tree Structures file contains only the hierarchical arrangement of the Medical Subject Headings (MeSH) with their associated tree numbers.

More detailed information concerning the MeSH Trees file and its availability is contained in the Documentation and Terms/Conditions statement on pages 771-791 of the 1994 July-August issue of the *Technical Bulletin* Appendix I. Please note that while the 1995 Trees file is now available, the 1996 electronic version will be available around mid-November.

British Heart Journal Will Change Title in 1996

Based upon information provided by the BMJ Publishing Group in 1994, NLM created a new SERLINE record for *Heart Journal*, which was to be a continuation of *British Heart Journal*. Readers were notified of this new title/title change in the March-April 1995 *NLM Technical Bulletin* (page 32). When the title did not change as expected, NLM removed the record from SERLINE.

In June, the NLM received notification from the BMJ Publishing Group that as of January 1996, the *British Heart Journal* will change its name to *Heart*. The ISSN number of the retitled journal will be 1355-6037. The journal cover, according to the information provided, will indicate that the title was formerly the *British Heart Journal*.

New Paper about Eugenics Available

The National Reference Center for Bioethics Literature at Georgetown University's Kennedy Institute of Ethics has published *Eugenics*, Scope Note 28 of the Scope Note Series from the National Reference Center for Bioethics Literature. The 11-page work offers a current look at recent views about eugenics as well as a brief history of this controversial topic by providing background information and citations to material from varied issues raised by theories and actions in this area of genetics.

Scope Note 28 also appears in the *Kennedy Institute of Ethics Journal* 1995 Mar 5(2): 163-178. The separate reprint version, with the complete list of titles in the series, is available for \$5.00 prepaid from the Kennedy Institute. Add \$3.00 each for airmail outside North America.

The Scope Note Series offers an overview to topics in biomedical ethics and provides immediate reference to facts, opinions, and law and public policy (if applicable). All sources cited in Scope Notes are included in the collection of the National Reference Center for Bioethics Literature, and may be obtained through its document

delivery service (subject to copyright law). Updates to topics covered in the Scope Note Series may be obtained by searching the BIOETHICSLINE database or by calling the National Reference Center for Bioethics Literature. Requests or questions should be directed to:

National Reference Center for
Bioethics Literature
Kennedy Institute of Ethics
Georgetown University
Washington, DC 20057-1065
800-MED-ETHX or 202-687-6738 □

FTS2000 Transition Schedule

Reminder: NLM is transitioning from the current telecommunications networks SprintNet (Telenet), TYMNET, and CompuServe to the new FTS2000 network. Please begin using the FTS2000 number 800-525-0216 according to the schedule below. If the date for your state has passed, you may begin using the new number immediately.

The article on pages 23-26 of the November-December 1994 *Technical Bulletin* explains the transition process in detail, including the new login procedure that must be used with the FTS2000 number. Grateful Med users need to select FTS2000 in the SETUP screen and type in 800-525-0216.

July and August 1995 - Regions 5 and 6

Users in the states of Alaska, Arkansas, Idaho, Louisiana, Montana, New Mexico, Oklahoma, Oregon, Texas, and Washington should transition to the FTS2000 network in July and August.

September and October 1995 - Regions 7 and 8

Users in the states of Arizona, California, Connecticut, Hawaii, Maine, Massachusetts, Nevada, New Hampshire, Rhode Island, Vermont, and American Samoa, Guam and military posts should transition to the new FTS2000 AT&T network.

If you have any difficulty with FTS2000, contact the MEDLARS Service Desk at 800-638-8480 or mms@nlm.nih.gov for assistance.

Continued from page 1

The five specialized modules cover many of the other MEDLARS databases:

Chemical/Toxicology/TOXNET Databases: These databases (including ChemID, CHEMLINE, TOXLINE, TOXLIT, and the various TOXNET databases) are taught in a comprehensive *two-day* module.

AIDS Databases: This *half-day* module includes searching on the free databases of AIDSLINE, AIDSTRIALS, AIDS DRUGS, and DIRLINE.

Cancer Databases: This *half-day* module includes CANCERLIT and PDQ.

POPLINE/BIOETHICS/HISTLINE: This *half-day* module covers these three specialized databases.

Health Services Research Databases: This *half-day* module gives an overview of this emerging field and concentrates on the family of NLM's databases in this area: HSTAR, HSRPROJ, and HSTAT.

The *Fundamentals of MEDLARS Searching* class is offered at **NO CHARGE** by **ALL** online training centers. The specialized modules offered by the three Regional Online Training Centers require payment of a cost-recovery fee.

Both the *Fundamentals* and the specialized modules concentrate on command language searching. They are **not** recommended for Grateful Med searchers. For training in the use of Grateful Med, consult your local medical library or the nearest NLM Regional Medical Library.

How to Apply

To register, use the *Request for NLM Online Training* form--Appendix D. Send

the completed form to the training center that will conduct the training session. Next to the training site name in the various schedules is a symbol indicating the training center to which the registration should be sent. Training classes held at NLM in Bethesda, Maryland, have no symbol indicator, and registration should be mailed to the MEDLARS Management Section. The reverse side of the registration form provides mailing and faxing information. If a class requires payment, instructions for payment will be sent to you by the training center teaching the module after you have registered.

Every attempt will be made to place training applicants in the class requested. If a class is filled, the applicants will be registered for their second choice, and also automatically placed on a waiting list for their first choice. Approximately one month prior to the class, registrants will receive a packet with information on hotels, local site arrangements and the class agenda.

Keep the following points in mind when applying for these classes:

- It is necessary to have a MEDLARS User ID code in order to attend any of the classes.
- The same form is used when applying for either the *Fundamentals* or any of the specialized modules. Please use a separate form for each applicant.
- Please specify the class dates and sites on your form. Remember to list a second choice to expedite scheduling.
- All classes/modules are considered "tentative" pending sufficient enrollment one month before the class.
- There are no prerequisites for the specialized modules. However, it is strongly recommended that you have previous experience/training or prior

knowledge of the ELHILL command language before attending. If you are attending a *Fundamentals* course on the three days immediately preceding a specialized module, you will be prepared for the material included in any specialized module. Alternatively, you may take a three-day *Fundamentals* course and then at a later date request and be scheduled for one or more specialized modules.

MEDLARS: Refresher & Review

The three Regional Online Training Centers also offer a four-hour workshop called *MEDLARS: Refresher & Review (MEDLARS R&R)*.

- This workshop includes a brief review of NLM system capabilities, a section covering recent enhancements to the systems such as proximity searching, and a demonstration of commands and techniques such as TFILE, SPRINT, online sorting, and Multi-File Searching (MFS).
- This workshop is intended for the experienced searcher who would like a system refresher or update. Computer hands-on sessions are not included.
- A cost-recovery fee may be charged for the workshop. This fee varies depending on the training center.

A preliminary 1996 *MEDLARS: R&R* schedule appears in Appendix C. The schedule is subject to change and additional workshops may be added; call your Regional Online Training Center to verify the current schedule or to schedule an R&R in your area. To register for one of these workshops, please use the *Request for NLM Online Training* form in Appendix D. □

--prepared by Janet Zipser
MEDLARS Management Section

NLM FTS2000—No Password Option

A new and improved access procedure that requires NO **network** password is now available to connect to NLM via the FTS2000 telephone number for

MEDLARS command language users, see Figure 1. (Grateful Med software will continue using the existing FTS2000 login procedure.) Speeds of 1200, 2400, and 9600 baud are supported. If you create good working scripts for your telecommunications software (for Windows®, or DOS products, or Macintoshes) and would like to share

that information with others, please mail or fax a printout of your scripts to:

MEDLARS Scripts
 National Library of Medicine
 MEDLARS Management Section
 8600 Rockville Pike
 Bethesda, MD 20894
 Fax: 301-496-0822 ☐

Key:

Use: 7 data bits; 1 stop bit; even parity; full duplex
 Items in **boldface** type should be input by you.

<- = Enter or Return Key
 xyz24/password = your User ID Code/Password

1. Dial 1-800-525-0216; wait for connection.
2. Connect 2400 (This message will vary depending on the communication speed)
3. <-
4. WELCOME TO AT&T FTS2000
5. enter login: **nopass** <-
 - Nopass is not case sensitive; the network will NOT prompt for a password.
6. last login 02/17/94 12:26:00 from 9049059
 - The date, time, and point of origin number will vary.
7. Please Wait
8. 9217355/9303262
 - These numbers will vary.
 FAC:P(128,128),W(2,2),D(9600,9600) com
9. NLM welcome menu will display.
10. PLEASE ENTER LOGIN SELECTION
 - Choose the letter of your choice from the NLM welcome menu.**b** <-
11. PLEASE ENTER USERID/PASSWORD
 - Enter your User ID code and password.**xyz24/password**

Figure 1 - FTS2000 No Password Access Procedure

Gold Standard Search

Thank you to everyone who mailed in search strategies in response to the "Gold Standard Search" article in the March-April 1995 issue of the *Technical Bulletin*. This feature offers searchers a chance to match wits with the NLM staff on a search strategy formulation. The Gold Standard search strategies are developed here at NLM. The search request published in the March-April 1995 issue was:

The user has asked for citations from 1994 forward on the concept of critical pathways and how critical pathways affect patient care.

The Winner

There was one winner! Our congratulations go to Marcia Anderson Reinhardt at the Medical University of South Carolina Library, Charleston, SC, who ran her search in MEDLINE, HEALTH and the Health Services/Technology Assessment Research (HSTAR) databases using the ELHILL command language. Ms. Reinhardt's search took advantage of many of ELHILL's advanced search strategies. She created a basic strategy in MEDLINE, SAVEd it and reused it in HEALTH and HSTAR. She also used the TFILE command to gate between the databases, allowing her to use the SPRINT command to print the combined citations from the three files. An honorable mention goes to Paul Tobin of St. Mary's Hospital, Brooklyn, NY, who ran separate (in contrast with Ms. Reinhardt's unified strategy) searches in the above mentioned three files.

Analysis of the Search Strategies

The Gold Standard Search retrieved 145 citations in HSTAR. Because the retrieval

was so large the search was further narrowed to only 1995 which brought the final number down to 59; see Figure 1. Ms. Reinhardt's strategy, shown in Figure 2, retrieved 26 citations in MEDLINE, 19 unique additional citations in HEALTH, plus three citations from HSTAR. The three HSTAR citations come from the subfiles unique to that file; however CATLINE, (CAT (SI)), was not included as one of HSTAR's subfiles (see SS14 in Figure 2) and a relevant CATLINE citation was missed as a result. The difference in the retrieval obtained from the two strategies can be attributed to two things: the difference in the Text Words used with the proximity search feature ADJACENCY and Ms. Reinhardt's use of MeSH headings to narrow the retrieval obtained with her ADJACENCY search (rather than limiting the retrieval to the most current year). Ms. Reinhardt searched on "critical adj pathway#" which would include pathway or pathways; the Gold Standard Search additionally searched on critical, clinical and care adjacent to path(s) and pathway(s), along with a few other ADJACENCY combinations. Caution: Do **not** truncate path with a colon (path:) or you will include pathology and your retrieval will include large numbers of irrelevant citations on critical or clinical pathology. It is extremely important to use the # with the root word "path" to substitute for single letter or space and search it as path#.

Choosing a File

For this search, it was not necessary to go first to MEDLINE; all the citations retrieved by Ms. Reinhardt's strategy in MEDLINE are available in HEALTH. It did no harm to the final results to go into MEDLINE first as she did, because she eliminated the overlapping citations in HEALTH by combining her retrieval with "and NOT med (si)." However, it does mean unnecessary time and money spent to search the two files and to retrieve duplicate citations in two files. The Gold Standard Search went directly to HSTAR. Searching this file directly gave the largest retrieval with a minimum amount of

search time and expense.

Search Strategy Suggestions

If you used ADJACENCY (ADJ) with critical and path(s) or pathway(s) and you were in file HEALTH or HSTAR, it would be hard to go wrong with this search. The MeSH headings used to refine the search are really not necessary. With a newly emerging concept, where a single term or phrase is not always found in all the relevant articles, the primary challenge is to find the synonyms that may be used to describe the subject. In this case, clinical or care adjacent to path(s) or pathway(s) were also frequently used to represent the same concept as critical paths. Ronald Gordner of NLM's Reference Section provided assistance in finding the additional phrases used in the Gold Standard Search. Searchers will be pleased to know that CRITICAL PATHWAYS is being introduced as a MeSH heading in 1996; so next year you will be able to search this concept by entering a single MeSH heading. There is also a new bibliography forthcoming as part of the NLM series *Current Bibliographies in Medicine* on the subject of critical pathways. Look for details on the publication date in a future issue of the *Technical Bulletin*.

The Next Gold Standard Search

The search question is:

Your client has been seeing too many summer movies. He wants you to find every article (for as far back as the database goes) published in the United States on Ebola in the human species and he also wants every article on the occurrence of Ebola in the United States, whether in humans or in animals.

Results will be published in the November-December 1995 *Technical Bulletin*. Entries must be received by October 20, 1995 to be considered.

Mail us a copy of your search strategy and include a printout of citations and

abstracts. If your strategy is selected for publication you could win either a copy of Grateful Med or one hour of free search time. In cases of multiple submissions of identical winning strategies, the prize winner will be either the person who is a first time winner or the first winning strategy received.

Search Hints for Direct Searchers

Select your database carefully. Limit your retrieval to English-language citations.

Search Hints for Grateful Med Users

Select your database carefully. Remember to use the F10 key to look at MeSH headings. Users with the Macintosh version of Grateful Med should view MeSH headings by clicking on Find MeSH Term on the search screen. Limit your retrieval to English.

Reminder

There are no exact answers or absolutely correct strategies, only best approximations, just like real life. Good luck!

Please send a copy of your search strategy with the retrieval, including printed abstracts, which database was searched and whether you searched directly or used Grateful Med to:

Gold Standard Search
 MEDLARS Management Section
 National Library of Medicine
 8600 Rockville Pike
 Bethesda, MD 20894 ☐

*--prepared by Toby Port
 MEDLARS Management Section*

```

USER:
file hstar

PROG:
YOU ARE NOW CONNECTED TO THE HSTAR (HEALTH SERVICES/
TECHNOLOGY ASSESSMENT) FILE

SS 1 /C?
USER:
critical adj path# or critical adj pathway#

PROG:
SS (1) PSTG (152)

SS 2 /C?
USER:
clinical adj path# or clinical adj pathway#

PROG:
SS (2) PSTG (50)

SS 3 /C?
USER:
care adj path# or care adj pathway#

PROG:
SS (3) PSTG (14)

SS 4 /C?
USER:
recovery adj path# or recovery adj pathway#

PROG:
SS (4) PSTG (4)

SS 5 /C?
USER:
care adj map# or care adj mapp: or all caremap:

PROG:
SS (5) PSTG (18)

SS 6 /C?
USER:
multidisciplinary adj action adj plan:

PROG:
SS (6) PSTG (1)

SS 7 /C?
USER:
1 or 2 or 3 or 4 or 5 or 6

PROG:
SS (7) PSTG (233)

SS 8 /C?
USER:
7 and 95 (yr) or 7 and 94 (yr)

PROG:
    
```

- Use the # not the : (colon) with "path" to avoid retrieving irrelevant material on pathology.

Figure 1 - Gold Standard Search

PROG:
SS (2) PSTG (55)

STS SS 3 /C?
USER:
2 and 95 (yr)

PROG:
SS (3) PSTG (6)

STS SS 4 /C?
USER:
2 and 94 (yr)

PROG:
SS (4) PSTG (28)

STS SS 5 /C?
USER:
3 or 4

PROG:
SS (5) PSTG (34)

STS SS 6 /C?
USER:
finished

PROG:
SEARCHNAME?

USER:
crit2

PROG:
SEARCH SET FROM SS 1 FORWARD SAVED AS 'CRIT2'.
SAVESEARCH COMPLETED.

SS 6 /C?
USER:
clinical protocols or practice guidelines or

PROG:
CNT 6

USER:
exp managed care programs or exp patient care management:

PROG:
SS (6) PSTG (31012)

SS 7 /C?
USER:
5 and 6

PROG:
SS (7) PSTG (24)

SS 8 /C?
USER:

Figure 2 - Marcia Reinhardt's Search cont.

5 and st
PROG:
SS (8) PSTG (6)

SS 9 /C?
USER:
5 and nu

PROG:
SS (9) PSTG (5)

SS 10 /C?
USER:
7 or 8 or 9

PROG:
SS (10) PSTG (26)

SS 11 /C?
USER:
tfile health

PROG:
YOU ARE NOW CONNECTED TO THE HEALTH
PLANNING & ADMIN (1975 FORWARD) FILE.

SS 11 /C?
USER:
crit2 (sn)

PROG:
SS (11) PSTG (43)

SS 12 /C?
USER:
11 and not med (si)

PROG:
SS (12) PSTG (19)

SS 13 /C?
USER:
tfile hstar

PROG:
YOU ARE NOW CONNECTED TO THE HSTAR (HEALTH
SERVICES/TECHNOLOGY ASSESSMENT) FILE

SS 13 /C?
USER:
crit2 (sn)

PROG:
SS (13) PSTG (51)

SS 14 /C?
USER:
(si) hta or htm or htx

- These qualifiers represent HSTAR'S unique subfiles.

PROG:
SS (14) PSTG (7457)

Figure 2 - Marcia Reinhardt's Search cont.

SS 15 /C?

USER:

13 and 14

PROG:

SS (15) PSTG (3)

SS 16 /C?

USER:

sprint 10,12,15 prompt • The SPRINT command allows online sorting.

PROG:

THE FOLLOWING OUTPUT OPTIONS ARE POSSIBLE:

- 1 UNSORTED, SEPARATE (ONE SEARCH STATEMENT AT A TIME).
- 2 SORTED, SEPARATE.
- 3 UNSORTED, COMBINED (ALL SEARCH STATEMENTS TOGETHER).
- 4 SORTED, COMBINED.

ENTER A SINGLE NUMBER FROM THE PRECEDING MENU:

USER:

4

PROG:

COMBINED SEARCHES WITH 48 ITEM(S) FROM MORE THAN ONE DATABASE ARE NOW READY FOR SORTING.

ENTER SORT SPECIFICATIONS, 'SAME', OR 'NONE':

USER:

jnl

- JNL means sort alphabetically by journal title abbreviation.

PROG:

SORT SPECIFICATIONS HAVE BEEN CHECKED FOR VALIDITY AGAINST THE MEDLINE FILE. ENTER SPECIFICATIONS FOR PRINTING (E.G., BR, SD, FU, DL), OR 'SAME' (DO NOT USE THE WORDS 'PRINT' OR 'PRT'):

:

PRINT ELEMENTS, IF ANY, WILL BE EVALUATED AGAINST THE MEDLINE FILE.

Figure 2 - Marcia Reinhardt's Search cont.

NLM Unveils "The Visible Man"

[Editor's Note: This article has been adapted from an article originally published in the November-December 1994 *NLM News*.]

The scenario is a fantastic one: before his execution, a convicted murderer wills his body to science and is "resurrected" 16 months later as a three-dimensional, computer-generated "cadaver" destined to be a teaching and research tool for the world.

That story received widespread media attention following presentation of the Visible Man on November 28, 1994 in Chicago. The Visible Man was released onto the Internet during a meeting of the Radiological Society of North America. That event marked the completion of the first phase of NLM's Visible Human Project (*NLM News*, January-February 1990). Phase two, the Visible Woman, will be completed by the end of 1995.

NLM's director, Donald A. B. Lindberg, M.D., said, "The Visible Man represents an incredibly detailed atlas of human anatomy, created from thousands of images of a human body collected with state-of-the-art radiographic and photographic techniques. This is the first time such detailed digital information about an entire human body has been compiled."

The Visible Man is so complex that those who wish to access the data (expected to be predominantly medical schools and researchers) will need up to two weeks of uninterrupted Internet time and 15 gigabytes of computer storage space. Although there is no charge for accessing the data via the Internet, users will be required to sign a licensing agreement with NLM stating how the information will be used. "The Visible Man will be made available free to those who suggest promising uses for the data and who have sufficient computer storage space," said Michael Ackerman, Ph.D., the Visible Human Project coordinator.

(Dr. Ackerman, previously acting director of NLM's division of Specialized Information Services, was recently named NLM's assistant director for High Performance Computing and Communications.)

Background

The Visible Human Project has its roots in the Library's 1986 Long-Range Plan, which recommended that the NLM should "...thoroughly and systematically investigate the technical requirements for and feasibility of instituting a biomedical images library." It encouraged NLM to consider building and disseminating medical image libraries much the same way it provides access to the biomedical literature. It foresaw a coming era where the Library's bibliographic and factual database services would be complemented by libraries of digital images, distributed over high-speed computer networks and by high-capacity physical media.

Early in 1989, under the direction of the Board of Regents, an ad hoc planning panel was convened to explore the proper role for NLM in the rapidly changing field of electronic imaging. After much deliberation, the NLM Planning Panel on Electronic Image Libraries made the following recommendation: "NLM should undertake a first project building a digital image library of volumetric data representing a complete, normal adult male and female. This Visible Human Project will include digitized photographic images for cryosectioning, digital images derived from computerized tomography, and digital magnetic resonance images of cadavers."*

A contract to create these images was awarded by NLM in August 1991 to the University of Colorado Health Sciences Center in Denver.

* Electronic imaging: Report of the Board of Regents. National Library of Medicine, 1990.

The Visible Man

The Visible Man was created with digitized data compiled from the body of a 39-year old man who was convicted of murder and executed by lethal injection. The donor body was imaged from head to toe using computed tomography (CT) and magnetic resonance (MR). It was then embedded in gelatin, frozen, and sectioned crosswise at 1 mm intervals, using a technique pioneered by principal investigators Victor Spitzer, Ph.D., assistant professor, Departments of Radiology, and Cellular and Structural Biology, and David Whitlock, M.D., Ph.D., professor, Department of Cellular and Structural Biology, University of Colorado Health Sciences Center.

As each cross-section was removed from the cadaver, the newly exposed surface of the frozen block was photographed. The digital photographs were stacked and programmed into an imaging computer along with the data acquired from the radiological studies. See the illustration on page 14.

"Reconstructions of the data can be rotated in space, viewed in any plane, dissected and reassembled," said Dr. Spitzer. "In the future, any anatomical part can be extracted from the body and viewed separately. Structures such as blood vessels can be followed throughout the body and their relationship to other structures, such as organs and bones, can be seen."

The data will be a powerful educational tool for students and it also can make an important contribution to medical research," said Dr. Whitlock. "Cancer researchers, for example, might introduce a mathematical model of abnormal cell growth into the Visible Man and follow it to see how a cancer grows in the body."

The data also will be helpful in planning surgery, designing artificial hips and other man-made body parts and testing various types of medical treatments, the researchers said.

Accessing the Visible Human

A License Agreement is required for use of the Visible Human Data Set. It can be retrieved from NLM's Gopher site, gopher.nlm.nih.gov. The agreement is found in the section entitled Visible Human Project as a text file and as a downloadable WordPerfect file. It is also available from NLM's ftp site, nlmpubs.nlm.nih.gov. The agreement is found in the section "visible" as a WordPerfect file, `vhpagree.wp`, or as a text file, `vhpagree.txt`. Please make two copies of the agreement and have both copies signed as originals by the appropriate officials at your institution. The agreement requires that you include a statement explaining your intended use of the data set. Send both signed copies of the agreement and the statement of proposed use to:

Dr. Michael J. Ackerman
Visible Human Project
National Library of Medicine
8600 Rockville Pike
Bethesda, MD 20894

The agreement will be signed here at NLM and one of the originals will be returned to you along with your account and password. You may use these to access the Visible Human Project ftp site to download all or part of the data set via the Internet. Together with your account and password, you will also receive information on where you may purchase the data set on 8mm Exabyte or 4mm DAT tape. The data set will be distributed from the ftp site and on tape in a z-compressed UNIX TAR format. There are six tapes of anatomical images corresponding to six body regions: head, thorax, abdomen, pelvis, thighs, and feet. A seventh tape contains all the MR and CT images. Each tape costs \$150 in the U.S., Canada and Mexico, \$300 elsewhere. An eighth sample tape, which contains anatomical images from the entire body at 1 cm increments, is also available. The set of eight tapes costs \$1,000 in the U.S., Canada and Mexico, \$2,000 elsewhere.

Sample full scale images are available via the [nlmpubs](http://nlmpubs.nlm.nih.gov) ftp site. Six full color

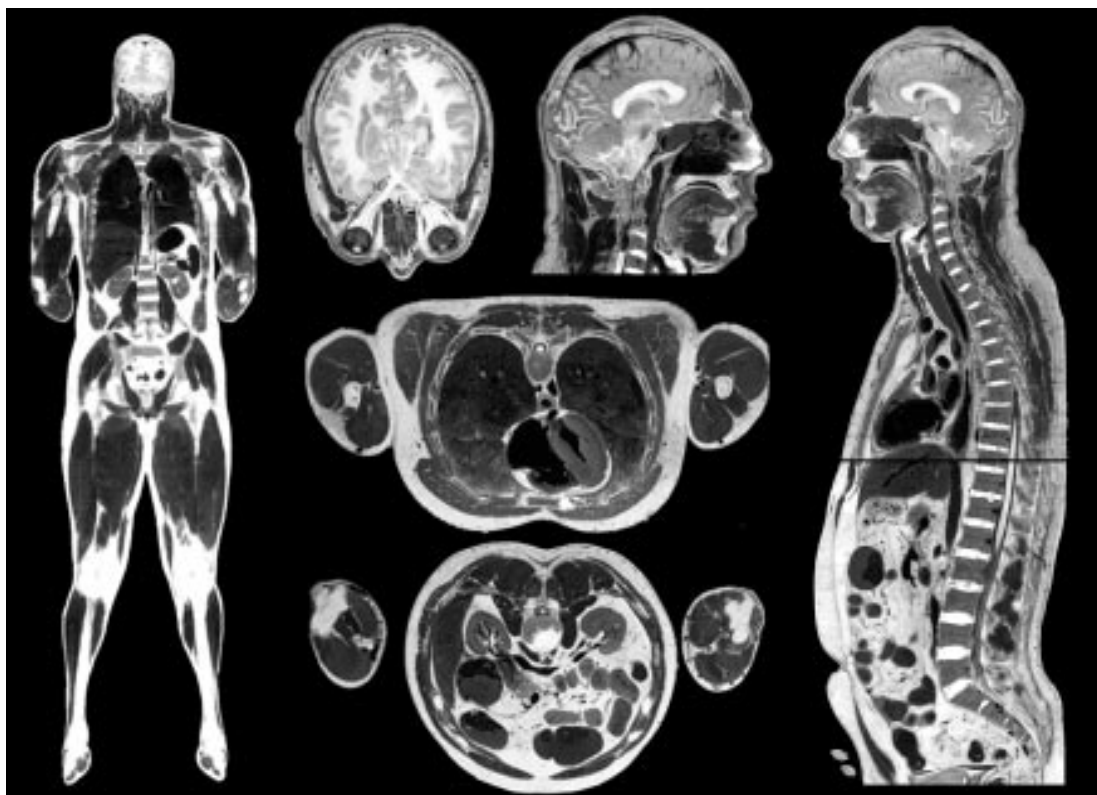
anatomical images and an explanatory README file can be found on [nlmpubs](http://nlmpubs.nlm.nih.gov) in `visible/bitmaps/color24` as `*.raw`. Please be careful as each of these images is over 7 megabytes in size. Ten CT scan images and an explanatory README file can be found in `visible/bitmaps/ct` as `*.fre` (five images captured while the cadaver was fresh) and `*.fro` (five images captured after the cadaver was frozen). Six MRI scan images and an explanatory README file can be found in `visible/bitmaps/mri` as `*.t1`.

Scaled down versions of all these image files can be found on the NLM ftp site in `visible/gifs` as `*.gif`. On the NLM Gopher, gopher.nlm.nih.gov and on the World-Wide Web, <http://www.nlm.nih.gov>, the images can be found in the Visible Human Project section.

For more information, contact Dr. Ackerman via e-mail:

ackerman@nlm.nih.gov. □

--prepared by Michael Ackerman, Ph.D.
High Performance Computing Center



The Visible Man compiles cross-section images to form an atlas of the human body.

SERIALS UPDATE

Indexed Titles Updated, July-August 1995

The following titles cited in MEDLINE, HEALTH, and HSTAR have recently been selected for indexing, undergone a title change, or ceased publication. This list is not cumulative; the information provided is only for titles whose status has changed since the last UPDATE. More detailed information may be found in SERLINE. For further information,

please contact MMS or Ms. Esther Baldinger, Technical Services Division at 301-496-3784 or elb@nlm.nih.gov.

Serials Update information may also be obtained by anonymous ftp from the host nlm.pubs.nlm.nih.gov. The file is in the directory /online/journals. The same Update information may also be obtained

from the NLM Gopher; first gopher to gopher.nlm.nih.gov, then select Online Services, then select Journal Title Lists. Questions about ftp from the NLM anonymous server should be addressed to:

ftpadmin@nlmpubs.nlm.nih.gov
and questions about the NLM Gopher should be addressed to:

admin@gopher.nlm.nih.gov

Titles Selected for Indexing, May-June 1995

INI ENFERMERIA INTENSIVA
ENFERM INTENSIVA
1,1988—
EDITORIAL GARSÍ
MADRID SPAIN
SOCIEDAD ESPANOLA DE
ENFERMERIA INTENSIVA Y UNIDADES
CORONARIAS.
INDEXING BEGAN WITH V5N1,1994.
ON ORDER 1130-2399
SR0078980 JC: CEJ
EDITORIAL GARSÍ; S.A.
C/ JUAN BRAVO; 46
28006 MADRID
SPAIN

INI JOURNAL OF WOUND CARE
J WOUND CARE
1N1,MAY 1992—
MACMILLAN
LONDON ENGLAND
FREQUENCY VARIES.
INDEXING BEGAN WITH V4N1,JAN
1995.
W1 JO973 0969-0700
SR0079315 JC: CDO
MACMILLAN MAGAZINES
BRUNEL ROAD
BASINGTOKE; RG21 2XS
ENGLAND

INI NP NEWS
NP NEWS
1N1,JAN/FEB 1993—
ELSEVIER SCIENCE INC
NEW YORK NY UNITED STATES
A PUBLICATION OF THE NURSE
PRACTITIONER: THE AMERICAN
JOURNAL OF PRIMARY HEALTH
CARE. IMPRINT VARIES.
INDEXING BEGAN WITH V3N1,JAN/FEB
1995.
W1 NP555 1069-6903
SR0076702 JC: CDP
NP NEWS
ELSEVIER SCIENCE INC.
655 AVENUE OF THE AMERICAS
NEW YORK NY 10010

IM OBESITY RESEARCH
OBES RES
1,1993—
NORTH AMERICAN ASSOCIATION FOR
THE STUDY OF OBESITY
BATON ROUGE LA UNITED STATES
INDEXING BEGAN WITH V3N1,JAN
1995.
W1 OB402KC
SR0076605 JC: CDE
OBESITY RESEARCH
6400 PERKINS ROAD
BATON ROUGE LA 70808-4124

INI PERSPECTIVES ON ADDICTIONS
NURSING
PERSPECT ADDICT NURS
1N1,APR 1990—
NATIONAL NURSES SOCIETY ON
ADDICTIONS
SKOKIE IL UNITED STATES
OFFICIAL PUBLICATION OF THE
NATIONAL NURSES
SOCIETY ON ADDICTIONS.
FREQUENCY VARIES: 1990?-1991?
QUARTERLY, 1992?- .
CONTINUES: NNSA NEWS, WHICH IS
NOT IN THE NLM COLLECTION.
INDEXING BEGAN WITH V5N1,SPRING
1994.
W1 PE872C 1057-1639
SR0074268 JC: CDN
NATIONAL NURSES SOCIETY ON
ADDICTIONS
4101 LAKE BOONE TRAIL; SUITE 201
RALEIGH NC 27607

The following is a new entry. Supplement 1 was indexed under the parent title, TRENDS IN NEUROSCIENCES, but that citation (UI=94249078) will be maintained and the TA will now be NEUROTOXINS.

IM NEUROTOXINS
NEUROTOXINS
1ST ED.,APR 1994—
ELSEVIER TRENDS JOURNALS
CAMBRIDGE ENGLAND
SUPPLEMENT TO: TRENDS IN
NEUROSCIENCES.
INDEXING BEGAN WITH 1ST ED.,APR.
1994.
IN PROCESS 1357-7115
SR0084122 JC: CD9

ELSEVIER TRENDS JOURNALS
JOURNALS CIRCULATION
DEPARTMENT
P.O. BOX 800
KIDLINGTON; OXFORD OX5 1DX
ENGLAND

Title Changes, May-June 1995

- INI AACN CLINICAL ISSUES
AACN CLIN ISSUES
6N1,FEB 1995—
J. B. LIPPINCOTT COMPANY
PHILADELPHIA PA UNITED STATES
AN OFFICIAL PUBLICATION OF THE
AMERICAN ASSOCIATION OF
CRITICAL-CARE NURSES.
CONTINUES: AACN CLINICAL ISSUES
IN CRITICAL CARE NURSING.
INDEXING BEGAN WITH V6N1,FEB 1995.
W1 AA101AP 1079-0713
SR0083890 JC: CDM
- INDEXING BEGAN WITH V14N1,JAN
1995.
W1 AN62H
SR0083756 JC: CC9
- IM INTERNATIONAL JOURNAL OF
BIOCHEMISTRY AND CELL BIOLOGY
INT J BIOCHEM CELL BIOL
VOL. 27, NO. 1 (JAN. 1995)-
PERGAMON
EXETER ENGLAND
CONTINUES: INTERNATIONAL
JOURNAL OF BIOCHEMISTRY.
INDEXING BEGAN WITH V27N1,JAN
1995.
W1 IN7655N 1357-2725
SR0083867 JC: CDK
- INI COMMUNITY NURSE
COMMUNITY NURSE
1N1,FEB 1995—
MACMILLAN MAGAZINES
LONDON ENGLAND
CONTINUES: COMMUNITY OUTLOOK.
VOL. 1 NO. 1 ACCOMPANIED BY
SEPARATELY PAGED SECTION
CALLED NURSE PRESCRIBER.
INDEXING BEGAN WITH V1N1,FEB 1995.
W1 CO429U 1358-0981
SR0083899 JC: CDX
- IM ACTA OPHTHALMOLOGICA
SCANDINAVICA
ACTA OPHTHALMOL SCAND
73N1,FEB 1995—
SCRIPTOR
HVIDOVRE DENMARK
CONTINUES: ACTA
OPHTHALMOLOGICA. HAS
SUPPLEMENT: ACTA
OPHTHALMOLOGICA SCANDINAVICA.
SUPPLEMENT.
INDEXING BEGAN WITH V73N1,FEB
1995.
W1 AC8811 1395-3907
SR0083742 JC: CC4
- IM ACTA OPHTHALMOLOGICA
SCANDINAVICA. SUPPLEMENT
ACTA OPHTHALMOL SCAND SUPPL
215,1995?—
SCRIPTOR
COPENHAGEN DENMARK
SUPPLEMENT TO: ACTA
OPHTHALMOLOGICA SCANDINAVICA.
CONTINUES: ACTA
OPHTHALMOLOGICA. SUPPLEMENT.
INDEXING BEGAN WITH V215,1995.
ON ORDER-TITLECHANGE
1395-3931
SR0083743 JC: CC5
- HLI CONTINUUM
CONTINUUM
VOL. 15, NO. 2 (MAR.-APR. 1995)-
SOCIETY FOR SOCIAL WORK
ADMINISTRATORS IN HEALTH CARE
OF THE AMERICAN HOSPITAL
ASSOCIATION
CHICAGO IL UNITED STATES
CONTINUES: DISCHARGE PLANNING
UPDATE. INTERDISCIPLINARY
JOURNAL ON CONTINUITY OF CARE.
INDEXING BEGAN WITH V15N2,MAR/
APR 1995.
W1 DI742V
SR0084060 JC: CD7
- IM JOURNAL OF INTERFERON AND
CYTOKINE RESEARCH
J INTERFERON CYTOKINE RES
VOL. 15, NO. 1 (JAN. 1995)-
MARY ANN LIEBERT
NEW YORK NY UNITED STATES
FORMED BY THE UNION OF:
JOURNAL OF INTERFERON
RESEARCH, AND: LYMPHOKINE AND
CYTOKINE RESEARCH. THE OFFICIAL
JOURNAL OF THE INTERNATIONAL
SOCIETY FOR INTERFERON AND
CYTOKINE RESEARCH.
INDEXING BEGAN WITH V15N1,JAN
1995.
W1 JO716KM 1079-9907
SR0083220 JC: CD4
- IM ACTUALITE MEDICALE
ACTUAL MED
1995—
S.N.
S.L. CANADA
CONTINUES: UNION MEDICALE DU
CANADA.
INDEXING BEGAN WITH 1995.
ON ORDER-TITLECHANGE
SR0083757 JC: CC6
- IM HISTOCHEMISTRY AND CELL
BIOLOGY
HISTOCHEM CELL BIOL
103,1995—
SPRINGER
BERLIN GERMANY
OFFICIAL JOURNAL OF THE SOCIETY
FOR HISTOCHEMISTRY. CONTINUES:
HISTOCHEMISTRY.
INDEXING BEGAN WITH V103N1,JAN
1995.
W1 HI748
SR0083808 JC: CDB
- IM JOURNAL OF PEDIATRIC
ENDOCRINOLOGY AND METABOLISM
J PEDIATR ENDOCRINOL METAB
VOL. 8, NO. 1 (JAN.-MAR. 1995)-
FREUND PUBLISHING HOUSE
LONDON ENGLAND
PRECEDING ENTRY: JOURNAL OF
PEDIATRIC ENDOCRINOLOGY JPEM.
INDEXING BEGAN WITH V8N1,JAN/
MAR 1995.
W1 JO828DR
SR0084204 JC: CEF
- IM APPLIED HUMAN SCIENCE
APPL HUMAN SCI
VOL. 14, NO. 1 (JAN. 1995)-
JAPAN SOCIETY OF PHYSIOLOGICAL
ANTHROPOLOGY
CHIBA JAPAN
CONTINUES: ANNALS OF
PHYSIOLOGICAL ANTHROPOLOGY.
SOME NUMBERS ISSUED WITH
SPECIAL SUPPLEMENT.

Title Changes, May-June 1995

- | | | |
|---|--|--|
| <p>IM NIHON SHINKEI SEISHIN YAKURIGAKU ZASSHI
NIHON SHINKEI SEISHIN YAKURIGAKU ZASSHI
14N1,FEB 1994—
JAPANESE SOCIETY OF NEUROPSYCHOPHARMACOLOGY
KAWASAKI JAPAN
CONTINUES: YAKUBUTSU, SEISHIN, KODO [JAPANESE JOURNAL OF PSYCHOPHARMACOLOGY].
INDEXING BEGAN WITH V14N1,FEB 1994.
W1 YA445N 1340-2544
SR0084251 JC: CEI</p> | <p>HLI PHARMACY PRACTICE MANAGEMENT QUARTERLY
PHARM PRACT MANAG Q
VOL. 15, NO. 1 (APR. 1995)-
ASPEN PUBLISHERS
FREDERICK MD UNITED STATES
CONTINUES: TOPICS IN HOSPITAL PHARMACY MANAGEMENT
INDEXING BEGAN WITH V15N1,APR. 1995.
W1 T0539MSF 1080-5737
SR0084162 JC: CEC</p> | <p>IDL STOMATOLOGIE
STOMATOLOGIE
92. JAHRG., HEFT 1 (FEB. 1995)-
SPRINGER-VERLAG
WIEN AUSTRIA
CONTINUES: ZEITSCHRIFT FUR STOMATOLOGIE.
INDEXING BEGAN WITH V92N1,FEB 1995.
W1 ZE609F 0946-3151
SR0083753 JC: CC7</p> |
| <p>INI NURSING NEW ZEALAND
NURS N Z
VOL. 1, NO. 1 (FEB. 1995)-
NEW ZEALAND NURSES ORGANISATION
WELLINGTON NEW ZEALAND
OFFICIAL JOURNAL OF THE NEW ZEALAND NURSES' ORGANISATION.
CONTINUES: NURSING NEW ZEALAND.
INDEXING BEGAN WITH V1N1,FEB 1995.
W1 NU642J 1173-2032
SR0083826 JC: CDL</p> | <p>IM PROCEEDINGS OF THE ASSOCIATION OF AMERICAN PHYSICIANS
PROC ASSOC AM PHYSICIANS
107,1995—
BLACKWELL SCIENCE
CAMBRIDGE MA UNITED STATES
CONTINUES: TRANSACTIONS OF THE ASSOCIATION OF AMERICAN PHYSICIANS. 1995 IS COMPLETE IN 3 ISSUES.
INDEXING BEGAN WITH V107,1995.
ON ORDER-TITLECHANGE
1081-650X
SR0083825 JC: CDQ</p> | <p>IM SWISS SURGERY
SWISS SURG
N1,1995—
VERLAG HANS HUBER
BERN SWITZERLAND
OFFICIAL ORGAN OF THE SWISS SOCIETY FOR SURGERY AND THE SWISS SOCIETY OF TRAUMATOLOGY AND INSURANCE MEDICINE.
FORMED BY THE UNION OF: HELVETICA CHIRURGICA ACTA; AND: ZEITSCHRIFT FUR UNFALLCHIRURGIE UND VERSICHERUNGSMEDIZIN.
INDEXING BEGAN WITH N1,1995.
ON ORDER-TITLECHANGE
1023-9332
SR0083844 JC: CDJ</p> |
| <p>IM OPHTHALMIC SURGERY AND LASER THERAPY
OPHTHALMIC SURG LASER THER
26N5,SEP/OCT 1995—
SLACK
THOROFARE NJ UNITED STATES
CONTINUES: OPHTHALMIC SURGERY.
INDEXING BEGAN WITH V26N5,SEP/OCT 1995.
ON ORDER-TITLECHANGE
1082-3069
SR0083937 JC: CDW</p> | <p>IM SANGYO EISEIGAKU ZASSHI
SANGYO EISEIGAKU ZASSHI
37,1995—
NIHON SANGYO EISEI GAKKAI
TOKYO JAPAN
ALSO NUMBERED AS: DAI 37-KAN DAI 2 GO (1995-NEN 3-GATSU)- .
CONTINUES: SANGYO IGAKU JOURNAL OF OCCUPATIONAL HEALTH.
INDEXING BEGAN WITH V37N1,JAN 1995.
W1 SA649A 1341-0725
SR0083995 JC: CD5</p> | <p>IM ZEITSCHRIFT FUR GEBURTSHILFE UND NEONATOLOGIE
Z GEBURTSHILFE NEONATOL
BD. 199, 1 (JAN./FEBR. 1995)-
FERDINAND ENKE VERLAG
STUTTGART GERMANY
CONTINUES: ZEITSCHRIFT FUR GEBURTSHILFE UND PERINATOLOGIE
INDEXING BEGAN WITH V199N1,JAN./FEB. 1995.
W1 ZE357C 0948-2393
SR0084186 JC: CED</p> |

Titles No Longer Indexed, May-June 1995

- IM GENE AMPLIFICATION AND ANALYSIS
GENE AMPLIF ANAL
1,1981-5,1987
ELSEVIER/NORTH-HOLLAND
NEW YORK NY UNITED STATES
INDEXING BEGAN WITH V1,1981.
W1 GE184N 0275-2778
G03750000 JC: GEF

The following entry has been reopened.

IDL AUSTRALIAN DENTAL PRACTICE
AUST DENT PRACT
1N1,MAR/APR 1990—
MAIN STREET PUBLISHING
MILSONS POINT NSW AUSTRALIA
RUNNING TITLE: DENTAL PRACTICE.
HAS SUPPLEMENT: AUSTRALIAN
DENTAL PRACTICE. AUXILIARY. (VOL.
1, 1990/91-VOL. 4 NO. 4, 1994?);
AUXILIARY, (VOL. 4 NO. 5 1994?)- .
IMPRINT VARIES. FREQUENCY VARIES.
CONTINUES: DENTAL REPORTER.
W1 AU524C 1320-2340
SR0071262 JC: BLE

The following entries have been deleted.

IDL AUSTRALIAN DENTAL PRACTICE AND
DENTAL PRACTICE BUSINESS
REGISTER
AUST DENT PRACT DENT PRACT BUS
REGIST
4N1,JAN/MAR 1993-5N4,OCT/DEC 1994?
MILSONS POINT AUSTRALIA
CONTINUES: AUSTRALIAN DENTAL
PRACTICE.
CONTINUED BY: AUSTRALIAN DENTAL
PRACTICE.
W1 AU524C
SR0083134 JC: CAL

IDL AUSTRALIAN DENTAL PRACTICE
AUST DENT PRACT
6N1,JAN/MAR 1995—
SYDNEY AUSTRALIA
CONTINUES: AUSTRALIAN DENTAL
PRACTICE AND DENTAL PRACTICE
BUSINESS REGISTER.
JC: CD6

January - April 1996

NLM Online Services Training Schedule

Fundamentals of MEDLARS Searching (3-Day Class)

Legend:

- + module taught by Eastern Online Training Center
- # module taught by Midlands Online Training Center
- * module taught by Western Online Training Center
- no indicator means class taught at NLM

Dates	Location
Jan 22-24	Bethesda, MD
Jan 22-24	New York, NY +
Jan 22-24	Seattle, WA *
Feb 5-7	Farmington, CT +
Feb 5-7	Houston, TX #
Feb 26-28	Los Angeles, CA *
Mar 5-7	Omaha, NE #
Mar 11-13	Bethesda, MD
Mar 11-13	Charleston, SC +
Mar 18-20	San Francisco, CA *
Apr 1-3	Boston, MA +
Apr 15-17	Bethesda, MD
Apr 16-18	Chicago, IL #

All Fundamentals of MEDLARS Searching Classes Are Free.

January - April 1996 Specialized Modules

Legend:

- A.M. module taught in the morning
 P.M. module taught in the afternoon
 If no A.M./P.M. indicator is present the class is a full day.
 + module taught by Eastern Online Training Center
 (two-day module=\$85; one-day module=\$85; half-day module=\$45)
 # module taught by Midlands Online Training Center
 (two-day module=\$85; one-day module=\$65; half-day module=\$40)
 * module taught by Western Online Training Center
 (two-day module=\$75; one-day module=\$65; half-day module=\$45)
 no indicator means class taught at NLM

Dates		Module	Location
Jan 25-26		Chem/Tox/TOXNET	Bethesda, MD
Jan 25	A.M.	Health Services Research	New York, NY +
Jan 25	A.M.	CANCERLIT/PDQ	Seattle, WA *
Feb 8-9		Chem/Tox/TOXNET	Houston, TX #
Feb 26	A.M.	CANCERLIT/PDQ	Bethesda, MD
Feb 26	P.M.	POPLINE/BIOETHICS/HISTLINE	Bethesda, MD
Feb 27	A.M.	AIDS Databases	Bethesda, MD
Feb 28	A.M.	Health Services Research	Bethesda, MD
Feb 29	A.M.	AIDS Databases	Los Angeles, CA *
Mar 1	A.M.	CANCERLIT/PDQ	Los Angeles, CA *
Mar 8	A.M.	AIDS Databases	Omaha, NE #
Mar 14-15		Chem/Tox/TOXNET	Bethesda, MD
Mar 14	A.M.	Health Services Research	Charleston, SC +
Mar 15	A.M.	AIDS Databases	Charleston, SC +
Mar 21	A.M.	CANCERLIT/PDQ	San Francisco, CA *
Apr 18-19		Chem/Tox/TOXNET	Bethesda, MD
Apr 19	A.M.	CANCERLIT/PDQ	Chicago, IL #

MEDLARS: Refresher & Review Preliminary 1996 Schedule

Note: This schedule is subject to change. Call your Regional Online Training Center if you would like to schedule a MEDLARS R&R workshop in your area.

Legend:

A.M. module taught in the morning

P.M. module taught in the afternoon

+ module taught by Eastern Online Training Center (212/876-8763 or 1-800-338-7657)
(MEDLARS R&R=\$45)

module taught by Midlands Online Training Center (402/559-4326 or 1-800-338-7657)
(MEDLARS R&R=\$30)

* module taught by Western Online Training Center (310/825-1200 or 1-800-338-7657)
(MEDLARS R&R=\$45)

January 26 A.M. New York, NY +

February 8 A.M. Farmington, CT +

How To Register: Call the Regional Online Training Center sponsoring the workshop according to the legend in the box at the top of this schedule.

REQUEST FOR NLM ONLINE TRAINING

The *Fundamentals of MEDLARS Searching* and the Specialized Modules concentrate on command language searching and thus are **not** recommended for *Grateful Med* searchers.

TRAINEE NAME: _____ PHONE: (_____) _____ x _____

ORGANIZATION: _____

ADDRESS: _____

CITY, STATE, ZIP: _____

User ID code: _____ **OR** I am also applying for a User ID code
(Please include application forms for a code.)

1. **FUNDAMENTALS OF MEDLARS SEARCHING (3-DAYS)**

DATES/SITES REQUESTED: _____
1st Choice 2nd Choice

2. **SPECIALIZED MODULES:** (Requires familiarity with MEDLARS.)

Please fill in Dates/Sites requesting:

AIDS Databases (1/2 Day) _____
1st Choice 2nd Choice

CANCERLIT/PDQ (1/2 Day) _____
1st Choice 2nd Choice

CHEM/TOX/TOXNET (2 Days) _____
1st Choice 2nd Choice

HEALTH SERVICES RESEARCH (1/2 Day) _____
1st Choice 2nd Choice

POPLINE/BIOETHICS/HISTLINE (1/2 Day) _____
1st Choice 2nd Choice

3. **MEDLARS: REFRESHER & REVIEW (1/2 Day)** _____
1st Choice 2nd Choice

MAILING/FAXING INSTRUCTIONS — SEE REVERSE SIDE OF FORM

**REGISTRATION FORMS SHOULD BE MAILED/FAXED ACCORDING TO THE
FOLLOWING LEGEND:****Site = Bethesda, MD**

Mail/FAX form to:

MEDLARS Management Section
ATTN: TRAINING
National Library of Medicine
8600 Rockville Pike
Bethesda, MD 20894

FAX: 301/496-0822 Questions? Call 1-800-638-8480

Site has symbol +

Mail/FAX form to:

Eastern Online Training Center
The New York Academy of Medicine
1216 Fifth Ave.
New York, NY 10029

FAX: 212/534-7042 Questions? Call 1-800-338-7657 (press #2) OR
212/876-8763

Site has symbol #

Mail/FAX form to:

Midlands Online Training Center
University of Nebraska
McGoogan Library of Medicine
600 South 42nd St., Box 986706
Omaha, NE 68198-6706

FAX: 402/559-5482 Questions? Call 1-800-338-7657 (press #2) OR
402/559-4326

Site has symbol *

Mail/FAX form to:

Western Online Training Center
Louise Darling Biomedical Library
University of California
10833 Le Conte Ave.
Los Angeles, CA 90024-1798

FAX: 310/825-5389 Questions? Call 1-800-338-7657 (press #2) OR
310/825-1200

ALL FUNDAMENTALS CLASSES ARE FREE

DO NOT SEND PAYMENT WITH REGISTRATION FOR SPECIALIZED MODULES;
THE FEE WILL BE PAID UPON CONFIRMATION OF CLASS.
INSTRUCTIONS ON PAYMENT WILL BE SENT TO YOU.

Retrieving NLM Publications in Electronic Format

There are three ways to retrieve issues of the *NLM Technical Bulletin* electronically via Internet: ftp, gopher or e-mail. New issues are added as they go to print; look for new issues on the server during the last week of February, April, June, August, October and December. Also available electronically are updated chapters of the *Online Services Reference Manual* (OSRM) and the serials publications: *List of Serials Indexed for Online Users* (LSIOU) and *List of Journals Indexed in Index Medicus* (LJI). Monthly update information for indexed titles, routinely found at the back of each *Technical Bulletin* issue, is also included in the full electronic version of the

Technical Bulletin. If you prefer to obtain the monthly serials update information separately, this option is also available. Instructions for retrieving any of these publications are included below.

If you prefer to get your copy of the *Technical Bulletin* routinely via ftp, gopher, or e-mail, please notify MMS so that we do not continue to mail you a *Technical Bulletin*. Use the Comment/Concern form included in the back of any issue or send an e-mail to mms@nlm.nih.gov. Please include your User ID code.

Technical Bulletin

ftp: PostScript files
anonymous ftp to [nlmpubs.nlm.nih.gov](ftp://nlmpubs.nlm.nih.gov)
in the directory `online/medlars/techbull`

gopher: PostScript files
[gopher.nlm.nih.gov](gopher://nlm.nih.gov)
in the directory `Online Services/MEDLARS
Information/NLM Technical Bulletin`

e-mail:

Send an e-mail message to: files@mailserv.nlm.nih.gov. In the body of the message, enter the commands:

```
SEND /nlminfo/newsletters/techbull/mmmmmm9y.ps
END
```

Note: `mmmmmm9y.ps` should be substituted with the proper months and year of the *Technical Bulletin* to be e-mailed, e.g., `octsep94.ps`.

Note: Commands must be sent in the body of the e-mail message; anything in the subject line is ignored.

After receiving the message, the e-mail file server will mail the PostScript file `mmmmmm9y.ps` back to you.

Online Services Reference Manual -- Updated Chapters

ftp: WordPerfect and PostScript files
anonymous ftp to [nlmpubs.nlm.nih.gov](ftp://nlmpubs.nlm.nih.gov)
in the directory `online/medlars/manuals`

gopher: WordPerfect files
[gopher.nlm.nih.gov](gopher://nlm.nih.gov)
in the directory `Online Services/MEDLARS
Information/Online Services Reference
Manuals`

NLM Serials Publications: LSIOU, LJI, and updates for indexed titles

ftp: WordPerfect, PostScript and Text files
anonymous ftp to [nlmpubs.nlm.nih.gov](ftp://nlmpubs.nlm.nih.gov)
in the directory `online/journals`

gopher: WordPerfect and Text files
[gopher.nlm.nih.gov](gopher://nlm.nih.gov)
in the directory `Online Services/Journal
Title Lists`

Questions?

ftp: ftpadmin@nlm.nih.gov
gopher: admin@gopher.nlm.nih.gov
e-mail: admin@mailserv.nlm.nih.gov

NLM Internet Directory

The following Internet addresses may be used for specific questions and comments to NLM:

AIDS-Related Databases and NLM AIDS Services Assistance	aids@aids.nlm.nih.gov
Anonymous ftp Service Assistance	ftpadmin@nlm.nih.gov
Fixed-Fee and Flat-Rate Special Agreements	ginter@nlm.nih.gov
GenBank Molecular Sequence Database Information	info@ncbi.nlm.nih.gov
Gopher and e-mail File Server Assistance	admin@gopher.nlm.nih.gov
Grateful Med	gmhelp@gmedserv.nlm.nih.gov
History of Medicine Division	hmdref@nlm.nih.gov
Interlibrary Loan (ILL)/DOCLINE Assistance	ill@nlm.nih.gov
International Programs Office	hsieh@nlm.nih.gov
MEDLARS Management Section	mms@nlm.nih.gov
MeSH Heading Suggestions	meshsugg@nlm.nih.gov
National Center for Biotechnology Information (NCBI)	info@ncbi.nlm.nih.gov
National Information Center on Health Services Research and Health Care Technology (HSTAR/HSTAT):	nichsr@nlm.nih.gov
Office of Public Information	publicinfo@occshost.nlm.nih.gov
Online Images from the History of Medicine	oli@nlm.nih.gov
Planning and Evaluation Office	siegel@nlm.nih.gov
Preservation Information	pres@nlm.nih.gov
Reference Assistance	ref@nlm.nih.gov
Technical Services Division	tsd@nlm.nih.gov
Toxicology Information Program	toxmail@tox.nlm.nih.gov

NLM Internet Access

TELNET

MEDLARS, PDQ & TOXNET
Locator
HSTAT

medlars.nlm.nih.gov
locator.nlm.nih.gov
text.nlm.nih.gov

FTP

MEDLARS Server
NLM Anonymous Server

medlars.nlm.nih.gov
nlmpubs.nlm.nih.gov

TOOLS

Mosaic (WWW)
Gopher
e-mail Based File Server

http://www.nlm.nih.gov/
gopher.nlm.nih.gov
files@mailserv.nlm.nih.gov

NLM PHONE NUMBERS: Public Information 800-272-4787 MEDLARS Service Desk 800-638-8480

WE VALUE YOUR OPINION.
We'd like to hear your compliments and concerns.

NAME:

USER ID CODE:

ADDRESS:

COMMENTS:

We work for you. Please tell us what is right and what you would like to see changed.

Return to: MEDLARS Management Section
National Library of Medicine
Bethesda, MD 20894 (FAX 301-496-0822)

CHANGE OF ADDRESS - U.S. USERS ONLY

You MUST include your User ID Code:

Mailing Information:

Address:

Billing Information, if different:

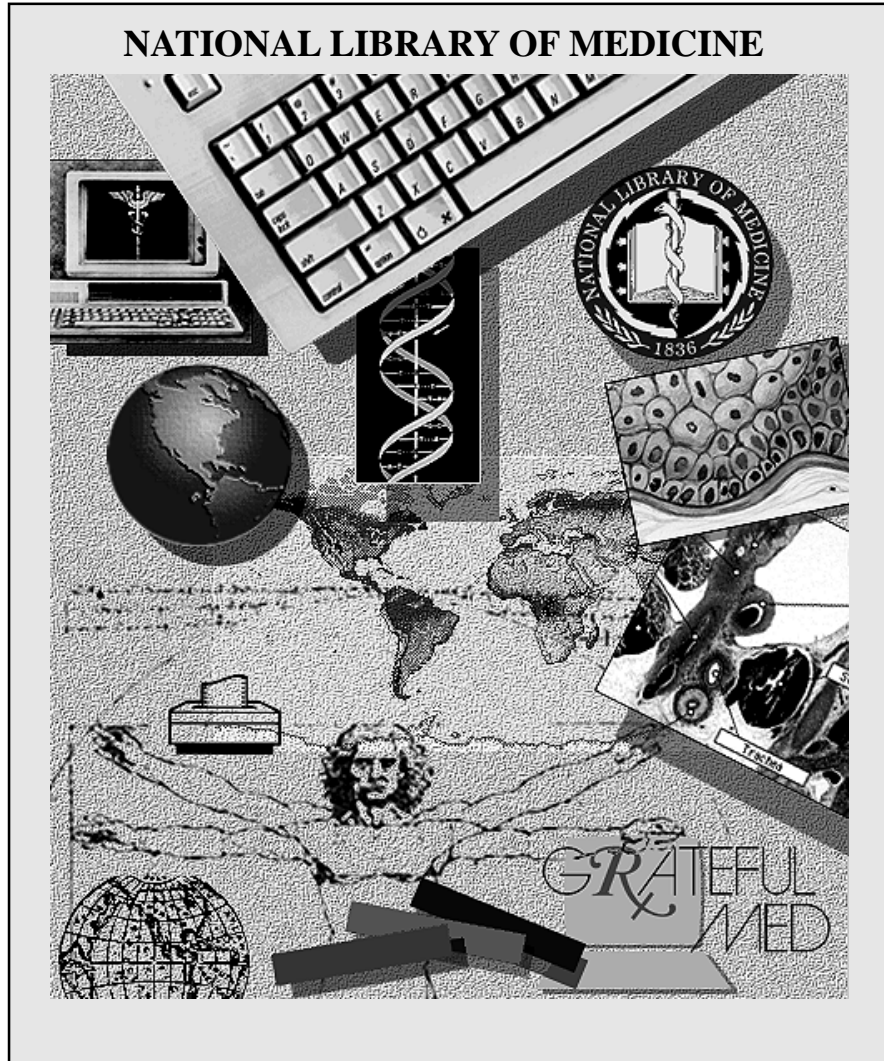
Address:

Daytime Phone:

Daytime Phone:

Check here if you purchased Grateful Med. The new address information will be forwarded to NTIS.

Return to: MEDLARS Management Section
National Library of Medicine
Bethesda, MD 20894 (FAX 301-496-0822)



NLM Phone Numbers: Public Information 800-272-4787
Internet E-Mail Addresses: publicinfo@ocshost.nlm.nih.gov

MEDLARS Service Desk 800-638-8480
mms@nlm.nih.gov

DEPARTMENT OF HEALTH AND HUMAN SERVICES
Public Health Service, National Institutes of Health
National Library of Medicine (#38/4N-421)
8600 Rockville Pike
BETHESDA, MARYLAND 20894

Official Business
Penalty for Private Use \$300

FIRST-CLASS MAIL
POSTAGE & FEES
PAID
PHS/NIH/NLM
PERMIT No. G-763