



NLM Technical Bulletin

National Library of Medicine | National Institutes of Health

2007 JANUARY-FEBRUARY No. 354

[RSS](#)

[Home](#)

[Back Issues](#)

[Indexes](#)

Articles:

PubChem IDs in MEDLINE®/PubMed® - e2

PubChem IDs now included in PubMed.

[Go to article](#)

LocatorPlus® Changes in 2006 - e3

Overview of 2006 version and design changes.

[Go to article](#)

PubMed Central®: New Journals Participating and New Content Added - e4

New journals participating and content from already participating journals has been added.

[Article updated on February 13, 2007]

[Go to article](#)

Technical Notes

[NLM Gateway Survey](#)

[Updated PubMed® Training Materials Available](#)

[MeSH® Subheading Consolidation Decision](#)

["Books" Removed from Links Menu in PubMed®](#)

[New NLM Technical Bulletin Index and "Articles About" Portal](#)

NLM® Announces the New Web Page: Journals Recently Accepted by NLM for Inclusion in MEDLINE®

RxNav Available to Search RxNorm

NCBI Influenza Resources Available

Tox Town® Adds New Port Neighborhood

PubMed® Subject Subset Strategies Updated for 2007

AHRQ Evidence Reports Added to NCBI Bookshelf

New Books Added to NCBI Bookshelf

NLM® Discontinues DOCLINE® 'ISO' Support

Papers of Rosalind Franklin Added to Profiles in Science®

E-Mail Sign Up	2007 JANUARY-FEBRUARY	No. 354	Home	Back Issues	NEXT	Indexes
--------------------------------	---------------------------------------	-------------------------	----------------------	-----------------------------	----------------------	-------------------------

U.S. National Library of Medicine, 8600 Rockville Pike, Bethesda, MD 20894
National Institutes of Health, Department of Health & Human Services
Copyright, Privacy, Accessibility
Freedom of Information Act (FOIA)
Last updated: 26 February 2007



NLM Gateway Survey

January 09, 2007 [posted]

On January 9, 2007, the National Library of Medicine® (NLM®) will begin inviting users of the NLM Gateway to take an online survey. The three-question survey is the first step in improving the search experience for NLM Gateway users. The survey asks users to define the type of information they are seeking, to describe their role in using the Web site, and how they arrived at the NLM Gateway Web site. It attempts to develop a profile of the typical NLM Gateway user (or user groups) to understand their requirements. This information will allow the site development team to better understand and meet the requirements and expectations of the various user groups.

The survey will be available to all users via a clickable link on the NLM Gateway homepage. A pop-up window will also appear randomly to users of the Web site inviting them to take the brief survey. No personally identifiable information will be collected during the survey and responses are confidential.

Updated PubMed® Training Materials Available

January 26, 2007 [posted]

The following PubMed training materials have been updated for 2007:

- the PubMed training workbook
- Branching Out: the MeSH Vocabulary instructional video
- the PubMed Tutorial

These materials have been updated to reflect changes in MeSH® and PubMed through December 2006. For details regarding these changes, see the November-December 2006 *Technical Bulletin*.

Technical Notes

[NLM Gateway Survey](#)

[Updated PubMed® Training Materials Available](#)

[MeSH® Subheading Consolidation Decision](#)

["Books" Removed from Links Menu in PubMed®](#)

[New *NLM Technical Bulletin* Index and "Articles About" Portal](#)

[NLM® Announces the New Web Page: Journals Recently Accepted by NLM for Inclusion in MEDLINE®](#)

[RxNav Available to Search RxNorm](#)

[NCBI Influenza Resources Available](#)

[Tox Town® Adds New Port Neighborhood](#)

[PubMed® Subject Subset Strategies Updated for 2007](#)

[AHRQ Evidence Reports Added to NCBI Bookshelf](#)

[New Books Added to NCBI Bookshelf](#)

[NLM® Discontinues DOCLINE® 'ISO' Support](#)

[Papers of Rosalind Franklin Added to Profiles in Science®](#)

Additional training materials for PubMed and other NLM® resources are available from the NLM Distance Education Program Resources page and the NLM Training Manuals and Resources site. The training manuals correspond to the NLM National Training Center and Clearinghouse training courses described at: <http://nmlm.gov/ntcc/description.html>.

MeSH® Subheading Consolidation Decision

January 30, 2007 [posted]

Last year, the National Library of Medicine® (NLM®) proposed to consolidate the 83 existing qualifiers (subheadings) in the Medical Subject Headings and create a smaller set. The goal was to make the use of qualifiers easier for the searching public. NLM distributed a background paper within the National Network of Libraries of Medicine, whose members also posted it on a number of widely seen listservs. At the Medical Library Association Annual Meeting in 2006, Dr. Stuart Nelson, Head of Medical Subject Headings, and those in attendance had a lively dialogue on the proposed changes.

Over the intervening months, NLM staff analyzed all comments, suggestions, and feedback. We considered the potential impact on the searching public, Network libraries, and the internal processes at NLM. Ultimately, in part due to budget constraints and limited resources, NLM has made the decision to retain the qualifiers in their present form. We hope to concentrate our efforts on other ways to improve searching and retrieval for all users. We greatly appreciate the many thoughtful comments received, and thank all those who provided input.

"Books" Removed from Links Menu in PubMed®

February 06, 2007 [posted]

The "Books" option on PubMed Links was removed. This is the function that used to link the content of PubMed abstracts to the Bookshelf via concept terms. Books continue to be linked from a PubMed abstract if the corresponding article has been cited in a book through the link "Cited in Books." An improved feature providing concept links from PubMed to Bookshelf Books will be added in the future.

To receive an e-mail notification of additions to the Bookshelf go to the Books-announce information page: <http://www.ncbi.nlm.nih.gov/mailman/listinfo/books-announce>.

New *NLM Technical Bulletin* Index and "Articles About" Portal

February 08, 2007 [posted]

A new portal to the *Technical Bulletin* Indexes and "Articles About" is now available from the *Technical Bulletin* homepage and subheader/footer in each article. The portal provides access to:

- a chronological list of "Articles About":
 - PubMed
 - NLM Gateway
 - Environmental Health and Toxicology
- Indexes:
 - 1997 - Present
 - 1979 - 1996
- PDF Archive 1969-1997

A new topic, Environmental Health and Toxicology, joins PubMed and the NLM Gateway on the "Articles About" list. Here you will find a chronological list of relevant articles and Technical Notes published in the *Technical Bulletin* as well as other useful resources.

NLM[®] Announces the New Web Page: Journals Recently Accepted by NLM for Inclusion in MEDLINE[®]

February 08, 2007 [posted]

NLM announces a new Web page that lists the journals accepted for MEDLINE indexing after LSTRC (Literature Selection Technical Review Committee) meetings. LSTRC meets three times per year (February, June, and October). The debut page has the complete list from the 2006 LSTRC meetings. Results from future meetings will be announced after each meeting with subsequent journals added to the top of the annual list.

This new resource includes the full journal title, the journal title abbreviation, NLM Unique Identifier, first issue to be indexed, ISSN (print or electronic or both), and language of the journal. Links from the full journal title take you to fuller bibliographic information about the journal in the NLM Catalog.

Some electronic-only journals are in a pending acceptance status (meaning that citations will not appear in PubMed[®]) until NLM receives confirmation from the publisher/editor of a permanent archive arrangement and approves the required submission of XML (Extensible Markup Language) electronic citation data.

RxNav Available to Search RxNorm

February 08, 2007 [posted]

An updated version of the Web-based browser RxNav is now available to search RxNorm, the NLM database of standard names for clinical drugs that references the names of approximately 17,000 clinical drugs from several sources. RxNav displays graphically links from clinical drugs, both branded and generic, to their active ingredients (e.g., Ibuprofen), drug components (e.g., Ibuprofen 200 MG) and drug forms (e.g., Ibuprofen Oral Tablet). It also associates generic with brand names (e.g., Ibuprofen / Advil).

Every aspect of the RxNorm database can be queried through RxNav, including the names and codes of drugs and components in the drug resources referenced by RxNorm. Spelling suggestions are offered when no exact match is found in RxNorm for a given input term. RxNav accesses the RxNorm server at NLM, which is updated monthly.

For more information, see the main Web site for RxNav: <http://mor.nlm.nih.gov/download/rxnav/>.

NCBI Influenza Resources Available

February 08, 2007 [posted]

Influenza virus infection is a major threat to public health in the United States, resulting in over 200,000 hospitalizations and 30,000 deaths each year. The Influenza Virus Genome Project is providing researchers with a growing collection of virus sequences essential to the identification of the genetic determinants of influenza pathogenicity. National Center for Biotechnology Information (NCBI) provides online tools for the analysis of these and other influenza sequences in GenBank.

For more information about these resources, please see: *New Databases and Tools Target Influenza. NCBI News. 2006 Summer;(15):1.*

Tox Town[®] Adds New Port Neighborhood

February 08, 2007 [posted]

[Editor's Note: This Technical Note is a reprint of an announcement published on NLM-Tox-Enviro-Health-L, an e-mail announcement list available from the NLM Division of Specialized Information Services. To subscribe to this list, please see the NLM-TOX-ENVIRO-HEALTH-L Join, Leave, or Change Options page.]

What do longshoremen, sunbathers, ship crews, and shrimp lovers have in common? Whether they live on the coast, work in a maritime industry or play on the beach, they can find information about the environment and how it might affect their health at Tox Town's new Port neighborhood. This imaginary port illustrates drinking water and air quality concerns along with wastewater treatment, shellfish safety, work hazards, sun and surf safety, aquaculture and many other topics. The port also highlights possible locations and descriptions of 26 hazardous chemicals.

Tox Town, <http://toxtown.nlm.nih.gov>, uses neighborhood scenes – the Port, City, Town, Farm, and US–Mexico Border region – along with color, graphics, sounds and animation to add interest to learning about connections between chemicals, the environment and the public's health. Tox Town's target audience is high school, college and graduate

students, educators (see the home page link *For teachers*), and the interested public. Tox Town also has a growing number of resources *en español*.

Tox Town® is a project of the Specialized Information Services Division of the National Library of Medicine®, National Institutes of Health®. Promotional materials and Tox Town images for Web sites and publications are listed at <http://toxtown.nlm.nih.gov/clipart.html>. Please send your comments or questions on Tox Town to tehip@tehl.nlm.nih.gov.

PubMed® Subject Subset Strategies Updated for 2007

February 13, 2007 [posted]

All PubMed subject subset strategies are reviewed at least once a year to see if modifications are necessary. Modifications may include revisions due to changes in MeSH vocabulary, adding or deleting terms, and changing parts of a strategy to try to optimize retrieval. The following subset strategies were recently revised: AIDS, Bioethics, Cancer, Complementary Medicine, Systematic Reviews, and Toxicology. The History of Medicine subset was revised in October 2006.

AHRQ Evidence Reports Added to NCBI Bookshelf

February 26, 2007 [posted]

The National Center for Biotechnology Information (NCBI) has recently added three new AHRQ (Agency for Healthcare Research and Quality) Evidence Reports to the HSTAT collection on the Bookshelf. HSTAT, Health Services/Technology Assessment Text, is a free, Web-based resource of full-text documents that provides health information and supports health care decision making.

127. Acute Stroke: Evaluation and Treatment

128. Diagnosis, Prognosis, and Treatment of Impaired Glucose Tolerance and Impaired Fasting Glucose

132. Costs and Benefits of Health Information Technology

New Books Added to NCBI Bookshelf

February 26, 2007 [posted]

Four new books have been added to the Bookshelf:

Disease and Mortality in Sub-Saharan Africa.

Jamison, Dean T.; Feachem, Richard G.; Makgoba, Malegapuru W.; Bos, Eduard R.; Baingana, Florence K.; Hofman, Karen J.; Rogo, Khama O., editors

Washington (DC): The World Bank; c2006

Available from: <http://www.ncbi.nlm.nih.gov/books/bv.fcgi?rid=dmssa.TOC&depth=1>

Cardiology Explained.

Ashley, Euan A.; Niebauer, Josef

London: Remedica; c2004

Available from: <http://www.ncbi.nlm.nih.gov/books/bv.fcgi?rid=cardio.TOC>

Genetics for Surgeons.

Morrison, Patrick J.; Spence, Roy A.J., authors Hatchwell, Eli, series editor

London: Remedica; c2005

Available from: <http://www.ncbi.nlm.nih.gov/books/bv.fcgi?rid=gfs.TOC>

Guide to Peripheral and Cerebrovascular Intervention.

Bhatt, Deepak L., editor

London: Remedica; c2004

Available from: <http://www.ncbi.nlm.nih.gov/books/bv.fcgi?rid=vd.TOC>

The books in Bookshelf may be searched directly from the Bookshelf site, via links from the Links pull-down menu from relevant PubMed® citations, or through the Entrez cross-database search page.

NLM® Discontinues DOCLINE® 'ISO' Support

February 26, 2007 [posted]

On January 25, 2007, the National Library of Medicine® (NLM) announced its decision to discontinue support for the DOCLINE ISO (International Organization for Standardization) ILL (Interlibrary Loan) Protocol. DOCLINE no longer offers connectivity using the ISO ILL Protocol (ISO 10160 and ISO 10161).

After fifteen months in production, support for the ISO ILL Protocol via DOCLINE was discontinued due to the considerable staff and IT resources required combined with a low demand from DOCLINE libraries for the ISO ILL connectivity. The current DOCLINE ISO libraries will be converted back to regular DOCLINE before April 30, 2007.

NLM continues to investigate alternate methods for DOCLINE participants with local ILL systems to exchange requests.

Papers of Rosalind Franklin Added to Profiles in Science®

February 26, 2007 [posted]

The National Library of Medicine® announces the release of an extensive selection from the papers of Rosalind Franklin, a chemist and crystallographer who did groundbreaking work in shedding light on the structure of DNA, on its Profiles in Science Web site.

Franklin began her scientific career analyzing the structure of coal and carbon during World War II, and became an internationally recognized expert in that field. For five years before her premature death, she did pathbreaking research that elucidated the structure of plant viruses. Yet chemist and crystallographer Rosalind Franklin (1920-1958) is now best known for the research that occupied her briefly: the structure of DNA.

Early in 1953, when Francis Crick and James Watson were struggling to build an accurate theoretical model of the DNA molecule, it was Franklin's meticulous X-ray diffraction photos and analyses that gave them crucial clues to DNA's structure, and allowed them to win the race for the double helix. Franklin didn't know that there was a race going on, and she never knew that Crick and Watson had access to her then, unpublished data.

The online exhibit features correspondence, published articles, photos, lab notebooks, and reports from Franklin's files. An introductory exhibit section places Franklin's achievements in historical context.

PREVIOUS	2007 JANUARY-FEBRUARY	No. 354	NEXT
E-Mail Sign Up	Home	Back Issues	Indexes

U.S. National Library of Medicine, 8600 Rockville Pike, Bethesda, MD 20894
National Institutes of Health, Department of Health & Human Services
Copyright, Privacy, Accessibility
Freedom of Information Act (FOIA)




January 26, 2007 [posted]

PubChem IDs in MEDLINE®/PubMed®

Unique Identifiers for records in the PubChem databases [*PubChem: An Entrez Database of Small Molecules. NLM Tech Bull. 2005 Jan-Feb;(342):e2.*] are now being included in MEDLINE/PubMed records when publishers send the IDs as part of their electronic citation submission to MEDLINE/PubMed. The databases (PubChem Substance, PubChem Compound, and PubChem BioAssay) provide information on the biological activities of small molecules, including substance information, standardized and validated chemical structures, and bioactivity screens.

In PubMed records, the PubChem IDs will display in the Secondary Source Identifier (SI) field in the Citation (see Figure 1) and MEDLINE display formats and in the <DataBankList> area of the XML format. The database name prefixes each ID number. The unique IDs in the Citation display of PubMed records also link directly to the associated records in PubChem.

[I: Nat Chem Biol. 2007 Jan 21; \[Epub ahead of print\]](#) [Related Articles, Links](#)

 nature publishing group

Small-molecule regulation of zebrafish gene expression.

[Esengil H, Chang V, Mich JK, Chen JK.](#)

Department of Chemical and Systems Biology, Stanford University School of Medicine, 269 Campus Drive, Center for Clinical Sciences Research, Room 3155, Stanford, California 94305, USA.

The zebrafish has emerged as a versatile model organism for biomedical research, yet its potential has been limited by a lack of conditional reverse-genetic tools. Here we report a chemically inducible gene expression technology that has orthogonality to vertebrate signaling processes, high induction levels, and rapid kinetics. Coupled with tissue-specific promoters, this system provides multidimensional control of gene expression and will enable new models of human disorders and diseases.

Secondary Source ID:

- [PubChem-Substance/17435648](#)
- [PubChem-Substance/17435649](#)
- [PubChem-Substance/17435650](#)
- [PubChem-Substance/17435651](#)
- [PubChem-Substance/17435652](#)
- [PubChem-Substance/17435653](#)
- [PubChem-Substance/17435654](#)

PMID: 17237798 [PubMed - as supplied by publisher]

Figure 1: PubMed's Citation Display showing PubChem IDs.

PubChem IDs can be searched in PubMed using the [si] search tag.

1. To retrieve a specific ID:
pubchem-substance/17424970 [si]
or
17424970 [si]

2. To retrieve all IDs for a PubChem database, search the database name:
pubchem-substance [si]

NLM began to accept PubChem IDs in electronic XML citation data submissions from publishers on January 11, 2007. PubChem IDs for a number of articles from the journal *Nature Chemical Biology* have also been added retrospectively to those citations. PubChem-Substance is the first PubChem ID data to be received. NLM itself will not capture PubChem ID data from articles.

PubChem was developed and is maintained by the National Center for Biotechnology (NCBI) and additional information is available at <http://pubchem.ncbi.nlm.nih.gov>.

By Andrea Demsey
MEDLARS Management Section

Demsey, A. PubChem IDs in MEDLINE®/PubMed®. NLM Tech Bull. 2007 Jan-Feb;(354):e2.

PREVIOUS	2007 JANUARY–FEBRUARY	No. 354	NEXT
E-Mail Sign Up	Home	Back Issues	Indexes

U.S. National Library of Medicine, 8600 Rockville Pike, Bethesda, MD 20894
National Institutes of Health, Department of Health & Human Services
Copyright, Privacy, Accessibility
Freedom of Information Act (FOIA)



NLM Technical Bulletin

National Library of Medicine | National Institutes of Health

2007 JANUARY–FEBRUARY; 354

[Table of Contents](#)

[Home](#)

[Back Issues](#)

[Indexes](#)

January 30, 2007 [posted]

LocatorPlus[®] Changes in 2006

During 2006, NLM[®] made many changes to LocatorPlus[®], the Library's Online Public Access Catalog (OPAC). LocatorPlus is the OPAC component of the Endeavor Voyager[®] software, the Library's Integrated Library System. NLM upgraded LocatorPlus by adding Voyager with Unicode in January and Voyager versions 5.0 and 6.1 in a second upgrade in early July.

In addition, a project team reviewed LocatorPlus configurations and layout design. Many LocatorPlus screens were customized and modifications were made to make searching more user friendly. These modifications were the first major changes to the overall look of LocatorPlus since its introduction in 1998. The information below outlines these version and design changes.

Display and Searching of Non-Roman Characters

This year the NLM made Endeavor's Voyager with Unicode¹ release available on LocatorPlus. The Voyager with Unicode release allows users to view and search the non-Roman characters present in over 4,000 LocatorPlus records (see Figure 1). Prior to this change, catalog records contained only transliterated title, author, publisher and other information. Now information is available for searching and display in the original language. Vernacular data are supplied for access points such as author, title, edition and imprint. Character sets currently represented in LocatorPlus include Arabic (see Figures 3 and 4), Chinese (simplified and traditional), Cyrillic, Hebrew, Japanese (Figures 1 and 2), and Korean. As new titles in these languages are added to the collection, vernacular data will be included in the LocatorPlus record.

As shown in Figures 2 and 4, Voyager with Unicode employs the MARC 21 880 fields to link Romanized versions of title, and name fields to the non-Roman counterparts.

Note: Users must install their operating system's font support for proper display as well as the appropriate keyboard layout.

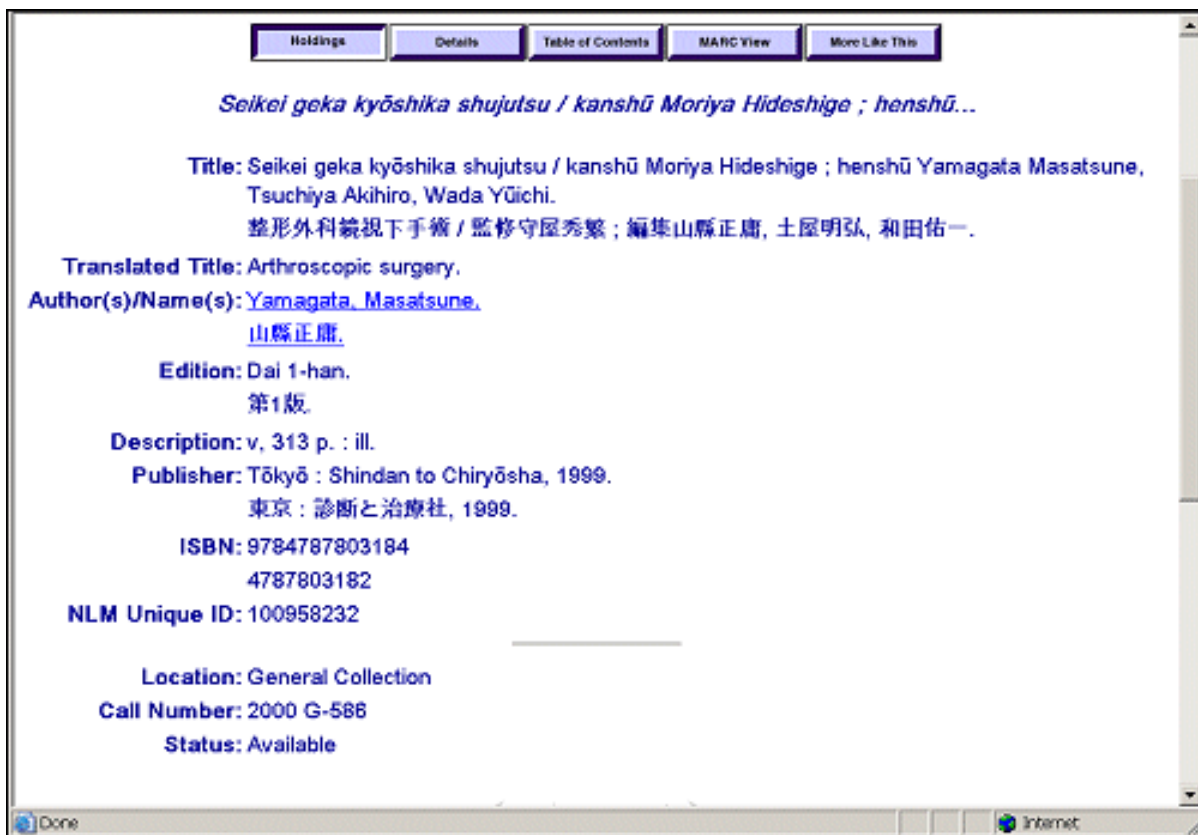


Figure 1: Holdings view of LocatorPlus record displaying non-Roman characters in Japanese.



Figure 2: Part of MARC View of Figure 1 record showing pairing of MARC 245, 250, 260, and 700 in 880 fields containing non-Roman characters in Japanese.

Holdings Details Table of Contents MARC View More Like This

Maṣāliḥ al-abdān wa-al-anfus / taʿlīf Abī Zayd al-Balkhī ;...

Relevance: ●

Title: Maṣāliḥ al-abdān wa-al-anfus / taʿlīf Abī Zayd al-Balkhī ; taqḍīm wa-dirāsah Mālik Badrī, Muṣṭafā ʿAshwī.
مصالح الأبدان والأنفس / تأليف أبي زيد البلخي ؛ تقديم ودراسة مالك بدرى، مصطفى عشوي.

Author(s)/Name(s): [Balkhī, Aḥmad ibn Saḥl](#),
[بلخي، أحمد بن سهل](#);
[Badrī, Mālik](#),
[ʿAshwī, Muṣṭafā](#).
[بدرى، مالك](#).
[عشوي، مصطفى](#).

Description: 177 p. ; 25 cm.

Publisher: al-Riyāḍ : Markaz al-Malik Fayṣal lil-Buḥūth wa-al-Dirāsāt al-Islāmīyah, 2003.
الرياض : مركز الملك فيصل للبحوث والدراسات الإسلامية، 2003.

ISBN: 9789960890128
9960890120

NLM Unique ID: 101259539

Location: General Collection

Call Number: 2005 M-167

Status: Available

http://locatorplus2.nlm.nih.gov/cgi-bin/Pwebrecon.cgi?SC=Author&SEQ=200512381654458&ID=sDoc_@?I=IDhp@x Internet

Figure 3: Holdings view of LocatorPlus record displaying non-Roman characters in Arabic.



Figure 4: Part of MARC View of Figure 3 record showing pairing of MARC 100, 245, 260, and 700 in 880 fields containing non-Roman characters in Arabic.

More information about Unicode is available in the LocatorPlus FAQ.

New LocatorPlus Features

Changes to LocatorPlus continued with the combined update in July to Voyager versions 5.0 and 6.1. Features that are now available with these versions include:

- **Additional keyword searching options in Simple Search:**

- Keyword (automatic AND)
- Keyword (automatic OR)
- Keyword Relevance (automatic AND)
- Name Keyword (automatic AND)
- Name Keyword (automatic OR)
- Subject Keyword (automatic AND)
- Subject Keyword (automatic OR)
- Title Keyword (automatic AND)
- Title Keyword (automatic OR)

Results of Keyword searches are sorted and displayed by title, with a secondary sort by date.

- **Availability of Headings Keyword searches in Simple Search:**

- Name Heading Keyword
- Name/Title Heading Keyword
- Series Heading Keyword
- Subject Heading Keyword

Heading Keyword searches result in an alphabetic listing of all the headings that contain the keyword(s) entered. Limits may not be used in Heading Keyword searches.

- **Availability of Holdings Keyword searches in Advanced Menu Search.**

This allows the searcher to specify a word or phrase from the Holdings statement as a search term. Figure 5 shows one of the ways to identify free electronic resources on a subject. Figure 6 shows a sample record retrieved.

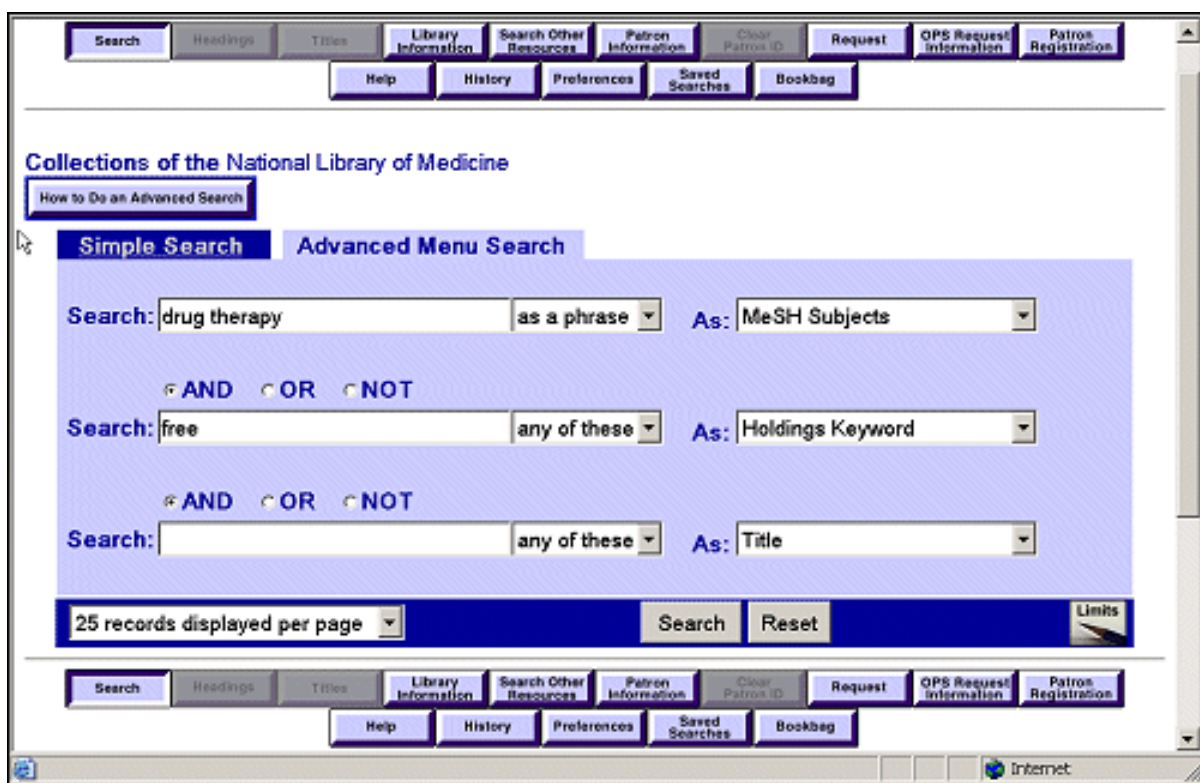


Figure 5: Holdings Keyword search on the MeSH term Drug Therapy for resources that are free on the Web.

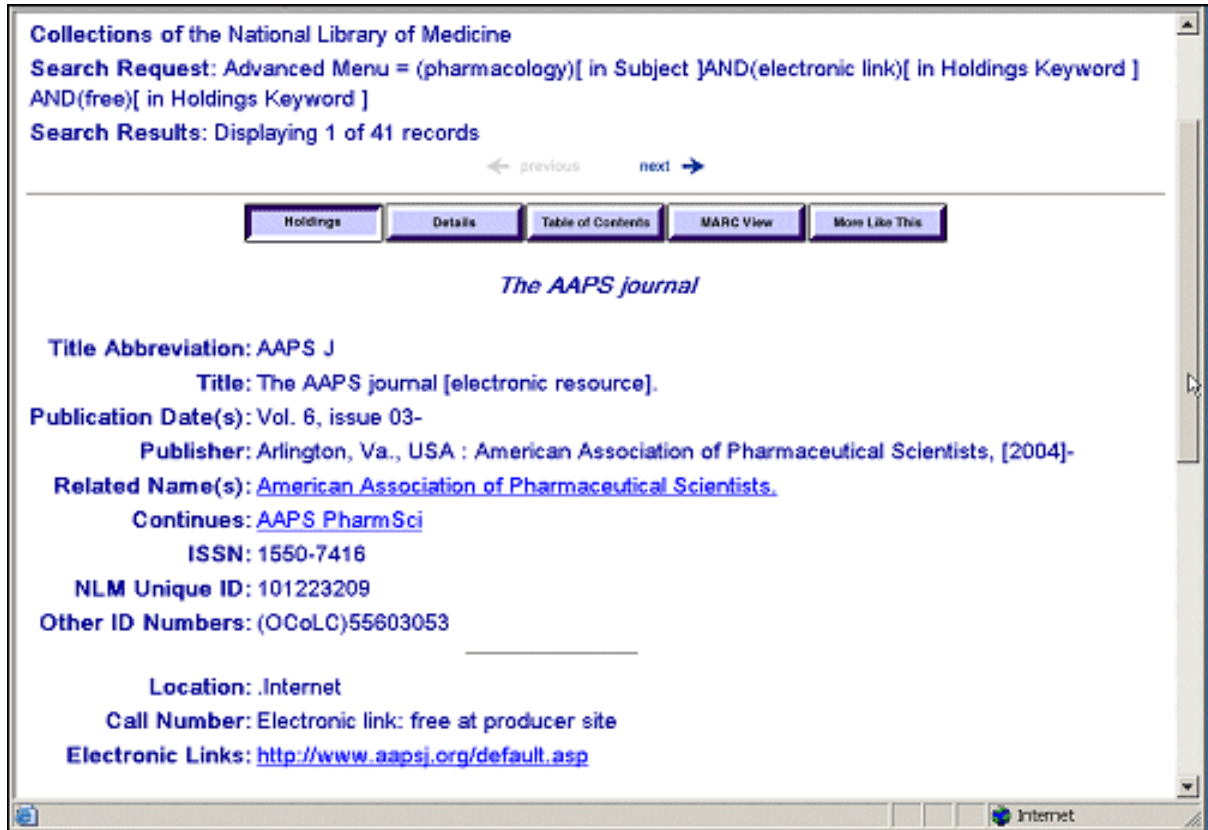


Figure 6: Holdings display of a record retrieved from the search in Figure 5 showing the occurrence of the Holdings Keyword "free" in the Call Number field.

The screen in Figure 7 shows how to identify records that include "finding aids," electronic resources used to locate specific items in an archival collection while Figure 8 shows a sample record retrieved.

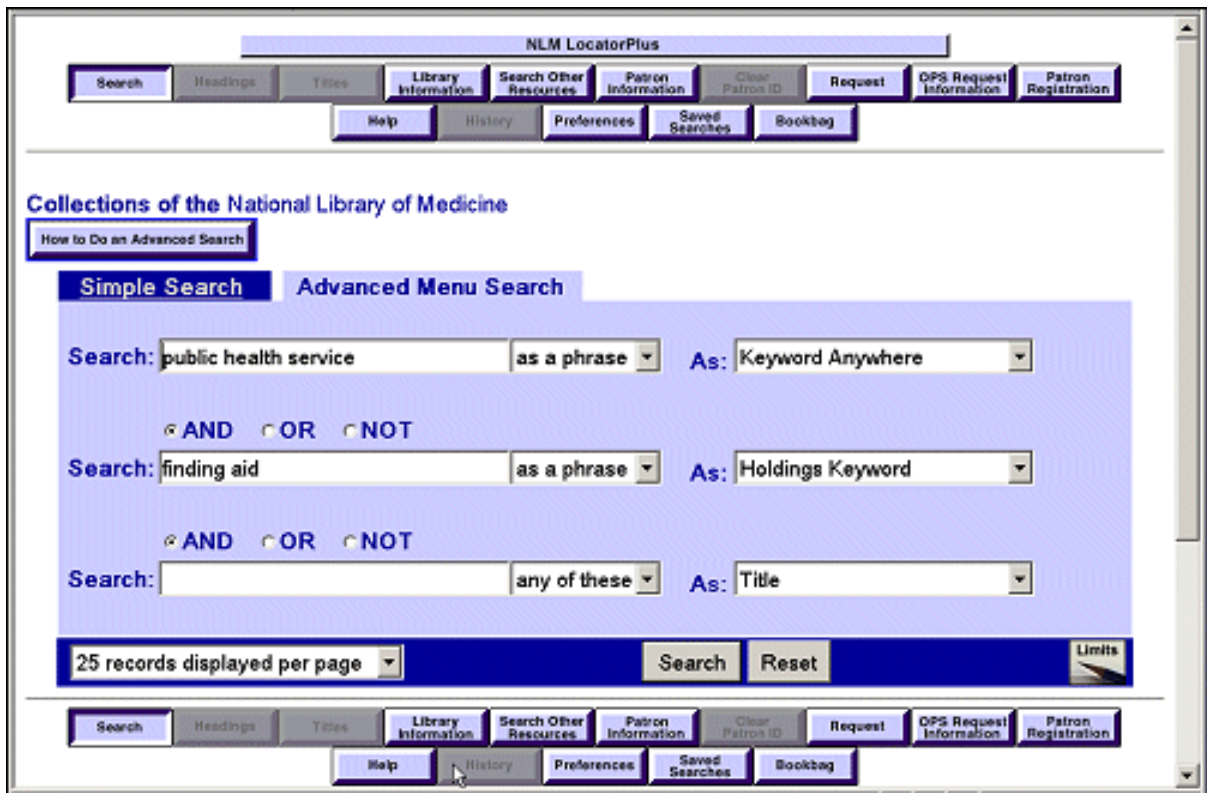


Figure 7: A Holdings Keyword search for archival materials by or about the Public Health Service that have finding aids. The MARC 21 holdings keyword field contains information on the electronic location and access to resources related to the described material, such as the finding aids produced by the NLM History of Medicine staff.

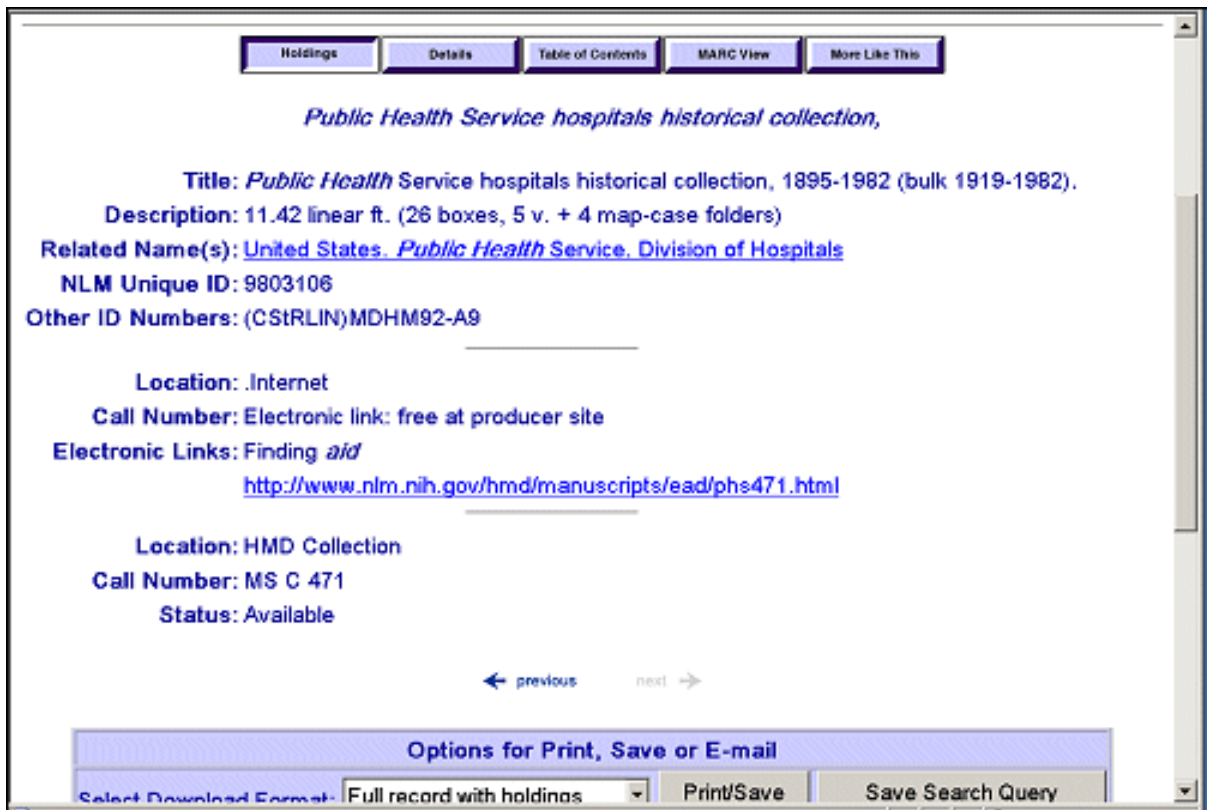


Figure 8: Holdings display of a record retrieved from the search in Figure 7 showing the keyword phrase "Finding aid" in the Electronic Links information.

● **Improved functioning of the question mark (?) as a wildcard.**

The question mark can now substitute for zero, one, or more characters at the beginning, or the middle of a search term, as well as at the end of the term.

Example:	Retrieves:
neuro?pharmacology	neuropharmacology, neuropsychopharmacology
h?ematology	hematology or haematology
?clinic	clinic, polyclinic, multiclinic, teleclinic, etc.
clinic?	clinic, clinics, clinical, clinician, clinicians, etc.

Note: the asterisk is not available as a wildcard in LocatorPlus because it is used in Voyager to increase the relevance of a term. The question mark wildcard does not work in Z39.50 searches of LocatorPlus.

- **The introduction of the percent sign (%) as a single-character wildcard.**

The percent sign can be used at the beginning, middle, or end of a search term and can be used in multiples to represent a specific number of characters:

Example	Retrieves
wom%n	woman or women
clinic%	clinics, clinica, clinico, etc.
clinic%%%	clinician, clinicals, etc.

Note: the percent sign wildcard does not work in Z39.50 searches of LocatorPlus.

- **Heading subdivision separators.**

MeSH headings are separated from subheadings by two dashes, providing a clearer display:

- 299 Lung Neoplasms
- 5 Lung Neoplasms--blood
- 27 Lung Neoplasms--chemically induced
- 2 Lung Neoplasms--chemistry
- 11 Lung Neoplasms--classification
- 8 Lung Neoplasms--complications

The heading subdivision separators display in both the Subject search results, as shown above, and in the Details display of an individual record.

- **Support of 13-digit ISBN.**

Effective January 1, 2007, the International Standard Book Number (ISBN) will increase in length from 10 digits to 13 digits. Voyager Version 6.1 supports this change, approved by the International Standards Organization in ISO 2108 (May 2005). The 13-digit ISBN increases the number of ISBNs available, enabling the publishing industry to accommodate new publishing formats and new publishers. It is possible to search LocatorPlus using either the 10-digit ISBN or the 13-digit number. See the article *Cataloging News 2007. NLM Tech Bull. 2006 Nov-Dec; (353):e4.* for more information on use of ISBN-13 in LocatorPlus records.

In LocatorPlus, search the ISBN by selecting ISBN as the type of search from the Advanced Menu choices. Enter the ISBN without using hyphens or spaces (see Figure 9):

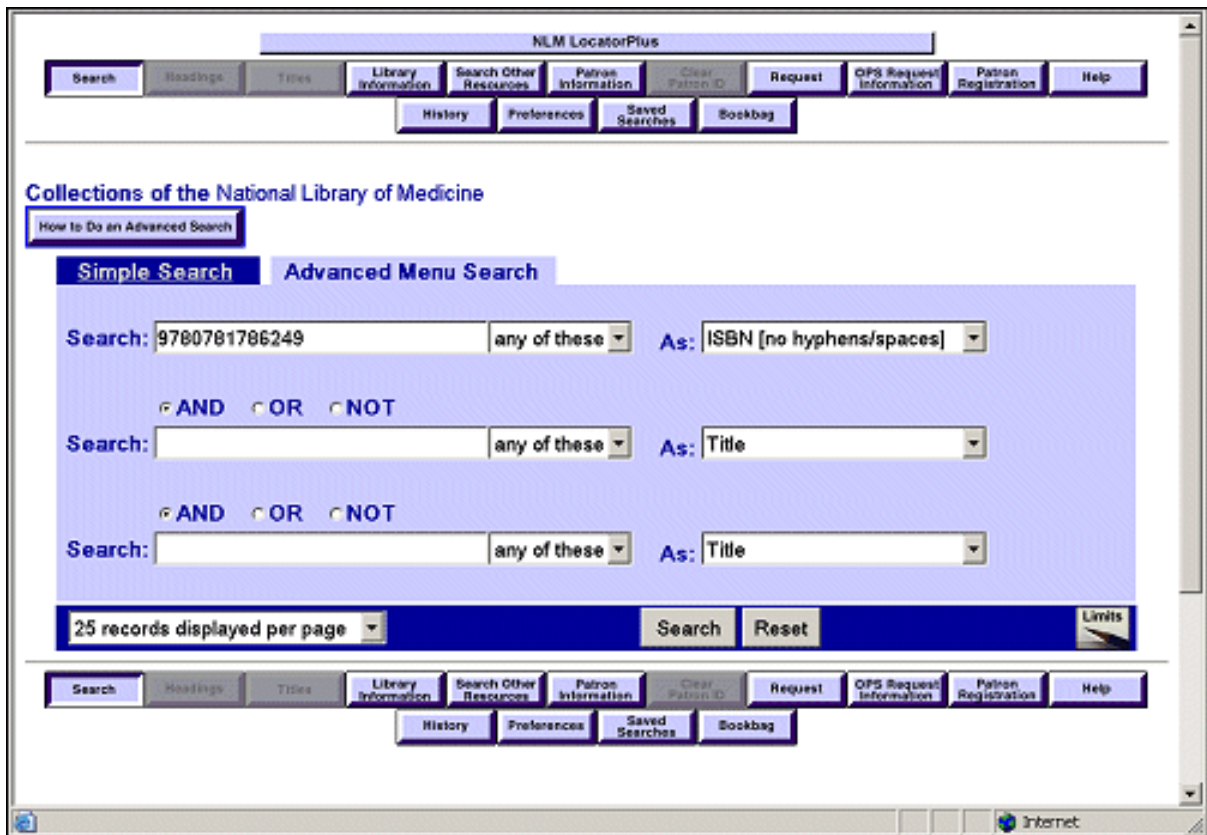


Figure 9: An Advanced Menu Search example for an ISBN with 13 digits.

Design Changes to LocatorPlus

Also in 2006, the Library introduced display modifications to some search screens, added new search types, and added two new display tabs. Some changes were subtle such as font styles, search screen labels, search button labels, button shapes, colors of some screens, and increasing search relevance by reweighting MARC fields included in several search types. Other enhancements that may be more obvious to LocatorPlus searchers include:

- **New choices for the number of records displayed on the Results page.**
Searchers can display 10, 25, 50, or 100 records per page.
- **The default display of authority record searches is now MARC View.**

- **Two new display tabs on the search results screen see Figure 10:**

1. **Table of Contents**

Click this tab to display the table of contents of a work. If no contents are available in a record, this message will show:

There is no Table of Contents in this record.

2. **More Like This**

Click this tab to find more records similar to the one retrieved. Depending on the record, a user can click on such elements as author, series, or subject heading to retrieve additional records that may be of interest.

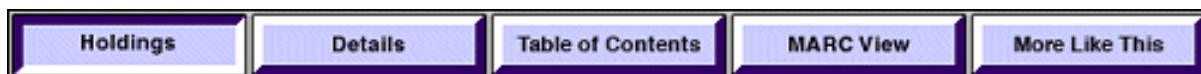


Figure 10: New line-up of display choices at the top of the LocatorPlus record display page. The new tabs can also be seen in Figures 1, 3, and 6.

- **Name as Subject.**

Added as a search option in both Simple Search and Advanced Menu Search. Use this option to search for materials about a person or organization.

- **Labeled fields in the Holdings and Details displays were reordered.**

For instance Author(s) /Name(s): now appears after Title:

- **New field labels enhance the Details display, especially of rare books.**

New labels for information formerly contained in Notes, with MARC fields and description, include:

Summary:	520 XX ab	Summary abstract, annotation, review, etc.
Terms of Use:	506 XX a	Restriction on Access Note
	540 XX a	Terms Governing Use and Reproduction Note
Cite As:	524 XX a	Preferred Citation of Described Materials
Acquisition Source:	541 XX acde35	Immediate Source of Acquisition

● **Journal Title searches display the full journal title.**

Full Title in the results list may help users in identifying the specific journal record wanted (see Figure 11).

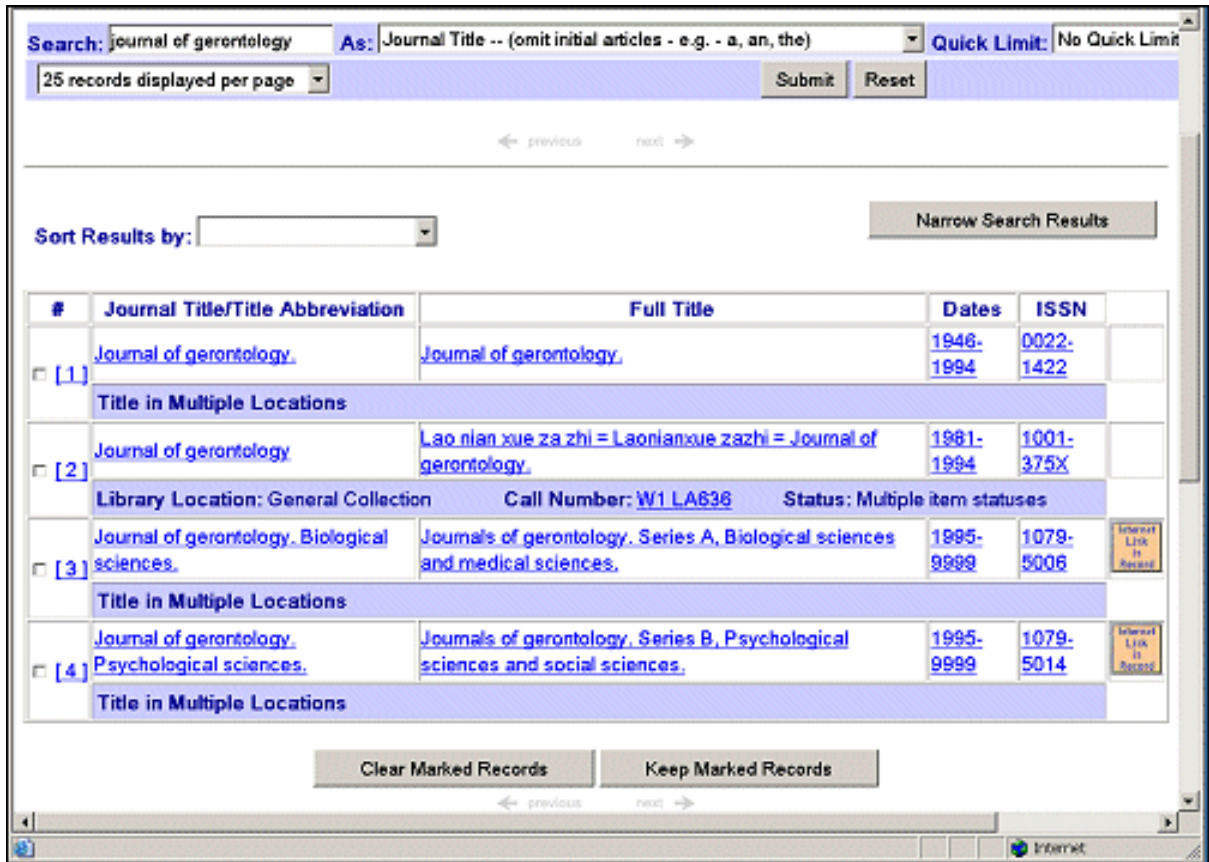


Figure 11: Results screen for Journal Title search of *Journal of Gerontology* displays Journal Title/Title Abbreviation and Full Title.

For more information about these changes, see the LocatorPlus FAQs or the LocatorPlus Help. Questions about LocatorPlus may be sent to NLM Customer Service.

¹ Unicode is the universal character encoding standard maintained by the Unicode Consortium. By using more than one byte to represent each character, Unicode can represent almost all characters for most of the world's written languages.

By Mary Conway
Reference and Web Services Section

Conway M. LocatorPlus Changes in 2006. NLM Tech Bull. 2007 Jan-Feb;(354):e3.

PREVIOUS	2007 JANUARY-FEBRUARY	No. 354	NEXT
E-Mail Sign Up	Home	Back Issues	Indexes

U.S. National Library of Medicine, 8600 Rockville Pike, Bethesda, MD 20894
National Institutes of Health, Department of Health & Human Services
Copyright, Privacy, Accessibility
Freedom of Information Act (FOIA)



February 07, 2007 [1st Edition]

February 13, 2007 [2nd Edition]

PubMed Central®: New Journals Participating and New Content Added

New Journals Participating

Ghana Medical Journal

[Posted in *NLM Technical Bulletin* Feb 13, 2007]

The journal *Ghana Medical Journal* is now participating in PubMed Central, beginning with issue 2005 Dec;39(4) to 2006 Sep; 40(3).

Ghana Medical Journal

ISSN: 0016-9560 (Print)

Title Abbreviation: Ghana Med J

Publisher: Accra Ghana Medical Association

NLM ID: 0073210

PMC Full text coverage: from 2005;39(4).

PMC URL: <http://www.pubmedcentral.gov/tocrender.fcgi?action=archive&journal=444>

Immunology

[Posted in *NLM Technical Bulletin* Feb 13, 2007]

The journal *Immunology* is now participating in PubMed Central, beginning with issue 1958 Jan;1(1) to 2006 Feb;117(2).

Immunology

ISSN: 0019-2805 (Print)

ISSN: 1365-2567 (Electronic)

Title Abbreviation: Immunology

Publisher: Blackwell Scientific Publications

NLM ID: 0374672

PMC Full text coverage: from 1958 Jan;1(1) to 2006 Feb;117(2).

PMC URL: <http://www.pubmedcentral.gov/tocrender.fcgi?action=archive&journal=337>

The Review of Diabetic Studies

[Posted in *NLM Technical Bulletin* Feb 6, 2007]

The journal *The Review of Diabetic Studies* is now participating in PubMed Central, beginning with issue 2004 Spring;1(1) to 2005 Winter; 2(4). More recent issues will be forthcoming with a 12-month publisher designated delay.

The Review of Diabetic Studies

ISSN: 1613-6071 (Print)

ISSN: 1614-0575 (Electronic)

Title Abbreviation: Rev Diabet Stud

Publisher: Society for Biomedical Diabetes Research

NLM ID: 101227575

PMC Full text coverage: from 2004;1(1).

PMC URL: <http://www.pubmedcentral.gov/tocrender.fcgi?action=archive&journal=392>

PubMed Central®: New Journals Participating and New Content Added. NLM Tech Bull. 2007 Jan-Feb;(354):e4.

PREVIOUS	2007 JANUARY-FEBRUARY	No. 354			
E-Mail Sign Up			Home	Back Issues	Indexes

U.S. National Library of Medicine, 8600 Rockville Pike, Bethesda, MD 20894
National Institutes of Health, Department of Health & Human Services
Copyright, Privacy, Accessibility
Freedom of Information Act (FOIA)